

# Motorhauben- und Tankverschlüsse Bonnet catches and tank caps

**HAPPICH GmbH**  
Lise-Meitner-Straße 14  
42119 Wuppertal  
Deutschland

Telefon +49 (0)202.87 03 – 0  
Fax +49 (0)202.87 03 – 599  
E-Mail [info@happich.de](mailto:info@happich.de)

[www.happich.de](http://www.happich.de)



**600 0380**

### Zungenschloss

Dornmaß ca. 13 mm  
 Stahl verzinkt  
 145 g/St.

VE 10 St.

Gesondert bestellen:  
 Vierkantschlüssel 600 0155 – 0157

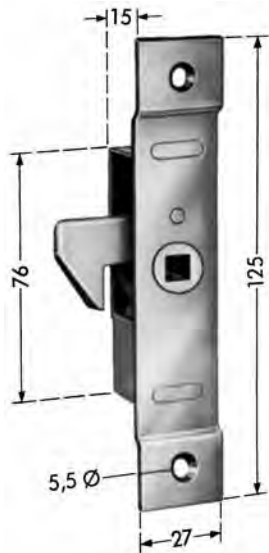
**600 0380**

### Latch lock

Mandrel depth approx. 13 mm  
 Zinc-plated steel  
 145 g/each

S.U. 10

Order separately:  
 Square key 600 0155 – 0157



**600 0137** links  
**600 0138** rechts

### Einlass-Schloss

für Schiebetüren, Dornmaß ca. 13 mm  
 Stahl blank  
 155 g/St.

VE 10 St.

Gesondert bestellen:  
 Vierkantschlüssel 600 0155 – 0157

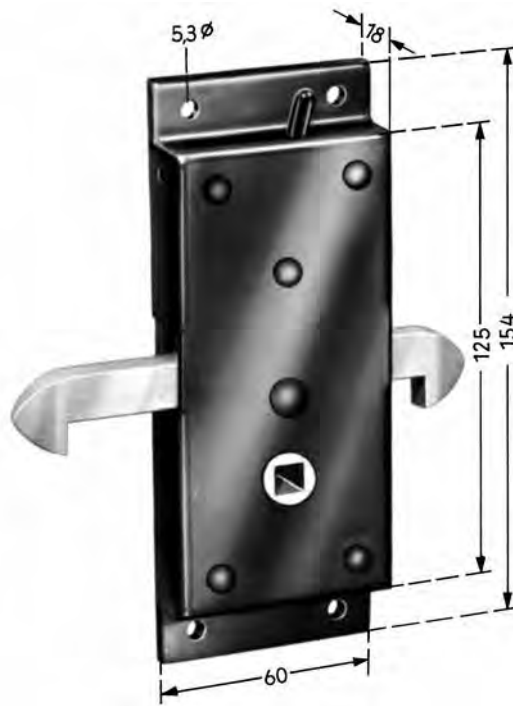
**600 0137** left  
**600 0138** right

### Recessed fitting lock

for sliding doors, Mandrel depth approx. 13 mm  
 Bright steel  
 155 g/each

S.U. 10

Order separately:  
 Square key 600 0155 – 0157



**600 0207** links  
**600 0208** rechts

### Schiebetürschloss

Innensicherung durch Umlegen des Hebels  
 Dornmaß ca. 30 mm  
 Schloss: Stahl schwarz lack.  
 Haken: GT verkadm.  
 600 g/St.

VE 1 St.

Gesondert bestellen:  
 Schließraste 600 0209

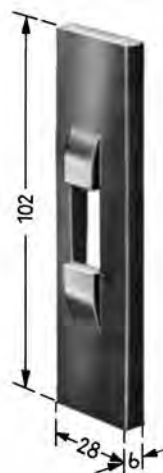
**600 0207** left  
**600 0208** right

### Sliding door lock

Interior locking by means of lever rotation  
 Mandrel depth approx. 30 mm  
 Lock: black painted steel  
 Hook: cadmium-plated malleable casting  
 600 g/each

S.U. 1

Order separately:  
 Latch retention plate 600 0209



**600 0209**

### Schließraste

zu 600 0207 / 0208  
 links und rechts verwendbar  
 GT roh  
 120 g/St.

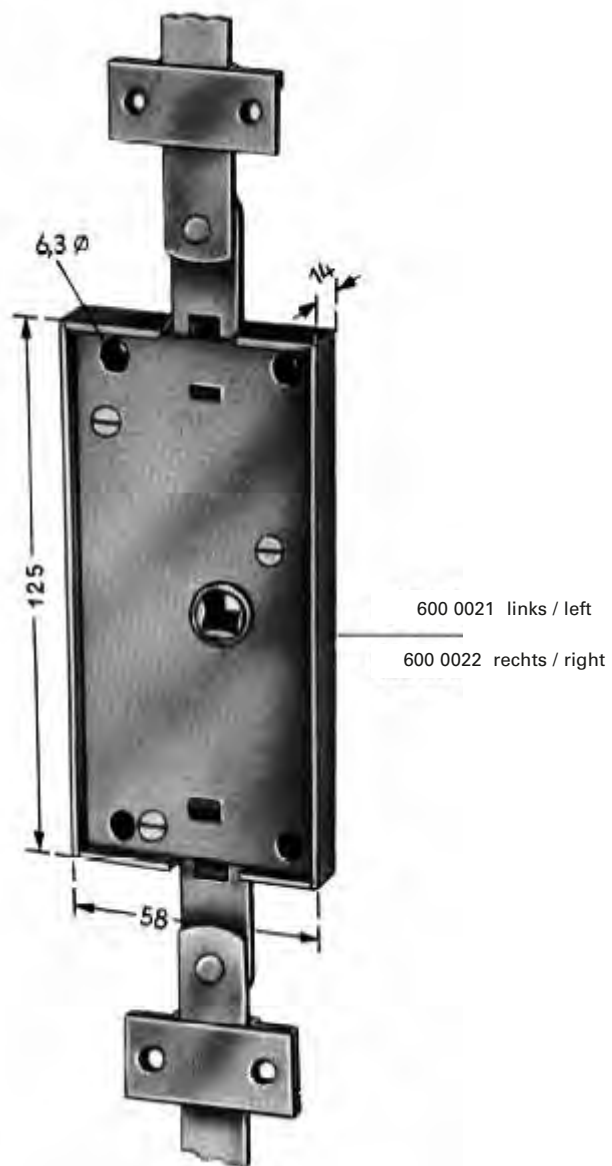
VE 1 St.

**600 0209**

### Latch retention plate

for 600 0207 / 0208  
 Applicable left and right  
 Untreated malleable casting  
 120 g/each

S.U. 1



**600 0021** links, 350 g/St.  
**600 0022** rechts , 400 g/St.

### Treibstangen-Schloss

Stahl verzinkt

VE 1 St.

Gesondert bestellen:  
 Federriegel 602 0138, Stahl blank,  
 150 g/St.

VE 2 St.

**600 0021** left, 350 g/each  
**600 0022** right, 400 g/each

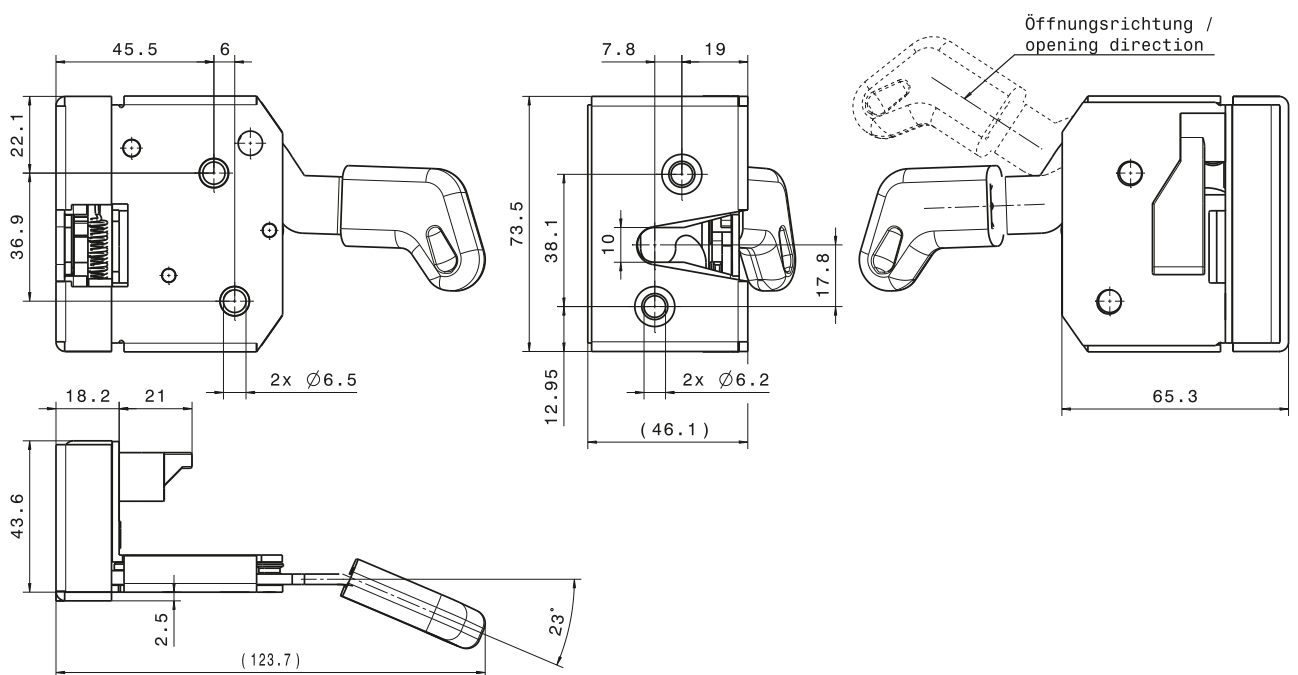
### Bolt lock

Zinc-plated steel

S.U. 1

Oder separately:  
 Spring catch 602 0138, bright steel  
 150 g/each

S.U. 2



**600 0579** links  
**600 0580** rechts

### Drehfallenschloss

ohne Sicherung  
 Stahl verzinkt, mit Verstärkungsplatte,  
 mit montiertem Innendrucker, Kunststoff, schwarz  
 Kombinationsmöglichkeiten siehe Seite 34, 37, 40  
 480 g/St.

VE 1 St.

Gesondert bestellen:  
 Schließbolzen 600 0598,  
 Gewindeplatte 600 0585

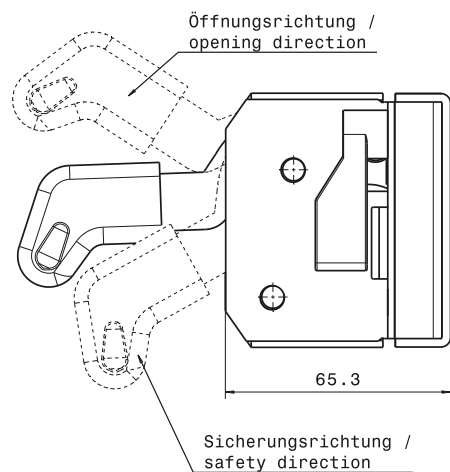
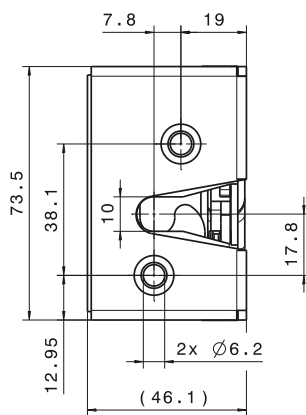
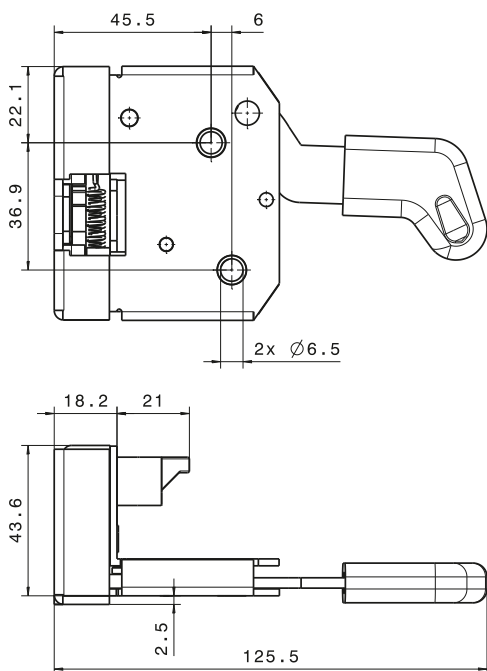
**600 0579** left  
**600 0580** right

### Rotary latch lock

without safety catch  
 Zinc-plated steel, with reinforcement plate,  
 Pre-assembled plastic, black interior handle  
 Please refer to page 34, 37, 40 for possible combinations  
 480 g/each

S.U. 1

Order separately:  
 Locking bolts 600 0598,  
 Threaded plate 600 0585



- 600 0575** links, ohne Sicherung
- 600 0576** rechts, ohne Sicherung
- 600 0577** links, mit Sicherung
- 600 0578** rechts, mit Sicherung

### Drehfallenschloss

Stahl verzinkt mit Verstärkungsplatte,  
mit montiertem Innendrücker, Kunststoff, schwarz  
Kombinationsmöglichkeiten siehe Seite 34, 37, 40  
480 g/St.

VE 1 St.

Gesondert bestellen:  
Schließbolzen 600 0598,  
Gewindeplatte 600 0585

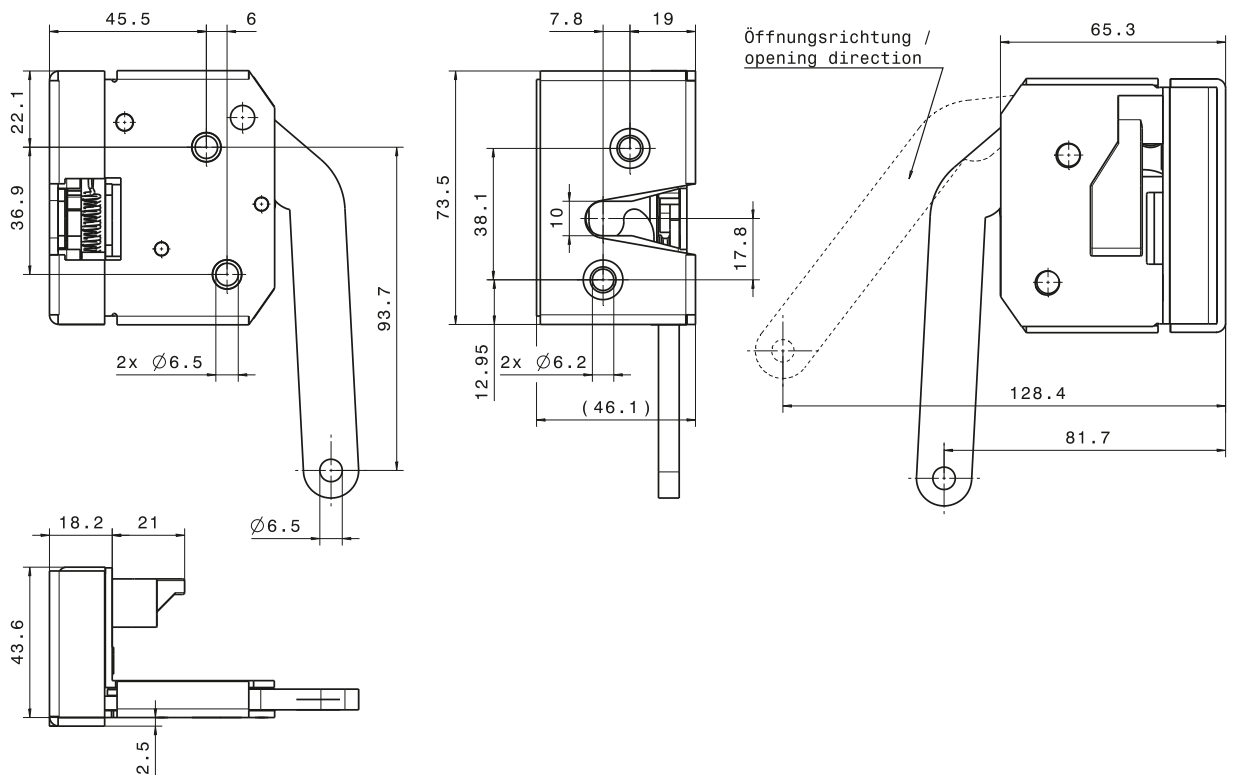
- 600 0575** left, without safety catch
- 600 0576** right, without safety catch
- 600 0577** left, with safety catch
- 600 0578** right, with safety catch

### Rotary latch lock

Zinc-plated steel, with reinforcement plate,  
Pre-assembled plastic, black interior handle  
Please refer to page 34, 37, 40 for possible combinations  
480 g/each

S.U. 1

Order separately:  
Locking bolts 600 0598,  
Threaded plate 600 0585



**600 0581** links  
**600 0582** rechts

### Drehfallenschloss

ohne Sicherung  
 Stahl verzinkt mit Verstärkungsplatte  
 Kombinationsmöglichkeiten siehe Seite 34, 37, 40  
 510 g/St.

VE 1 St.

Gesondert bestellen:  
 Schließbolzen 600 0598,  
 Gewindeplatte 600 0585

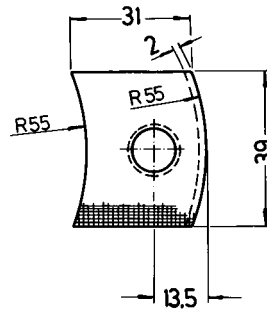
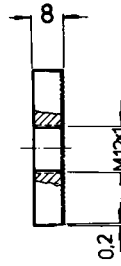
**600 0581** left  
**600 0582** right

### Rotary latch lock

without safety catch  
 Zinc-plated steel, with reinforcement plate  
 Please refer to page 34, 37, 40 for possible combinations  
 510 g/each

S.U. 1

Order separately:  
 Locking bolts 600 0598,  
 Threaded plate 600 0585



**600 0585**

**Gewindeplatte**

zu 600 0575 – 600 0582  
 Stahl roh entgratet  
 70 g/St.

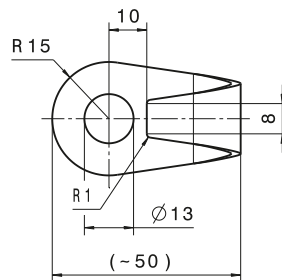
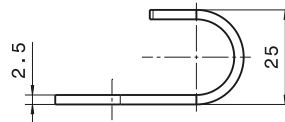
VE 10 St.

**600 0585**

**Threaded plate**

for 600 0575 – 600 0582  
 Untreated steel, deburred  
 70 g/each

S.U. 10



**600 0606**

**Abweisbügel**

zum Schutz des Schließbolzens  
 Stahl schwarz verzinkt  
 30 g/St.

VE 1 St.

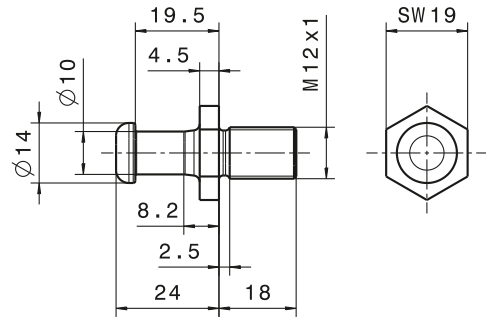
**600 0606**

**Guard**

to protect the locking bolt  
 Black zinc-plated steel  
 30 g/each

S.U. 1





**600 0598**

### Schließbolzen

mit 18 mm Gewindelänge  
zu 600 0575 – 600 0582  
Stahl schwarz passiviert  
40 g/St.

VE 1 St.

---

Aus Sicherheitsgründen sollte der Schließbolzen nur  
in Verbindung mit dem Abweisbügel 600 0606 montiert  
werden.

**600 0598**

### Locking bolt

Thread length 18 mm  
for 600 0575 – 600 0582  
Black zinc-plated steel  
40 g/each

S.U. 1

---

For safety reasons should the locking bolts only be  
mounted in connection with guard 600 0606.



**580 0002**

**Schloss-Innengriff**

mit 8 mm Vierkantloch um 45° versetzt und  
 Hutmutter M8 zu 600 0093 / 0094 / 0098  
 Grifflänge 115 mm  
 Griff: GD Zn verchromt  
 Hutmutter: Stahl verchromt  
 110 g/St.

VE 1 St.

**580 0002**

**Interior lock handle**

with 8 mm square hole offset 45° and  
 M8 cap nut for 600 0093 / 0094 / 0098  
 Handle length 115 mm  
 Handle: chrome-plated die-cast Zn  
 Cap nut: chrome-plated steel  
 110 g/each

S.U. 1



**580 0098**

**Schloss-Innengriff**

mit Abdeckung und Riffelbuchse zu  
 600 0213 / 0214 / 0503 / 0504  
 Grifflänge 95 mm  
 Griff: GD Zn verchromt  
 Abdeckung: PVC schwarz  
 88 g/St.

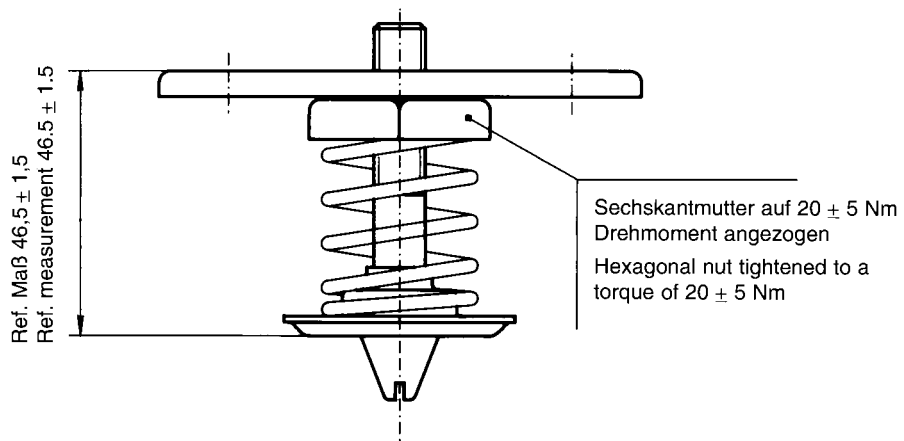
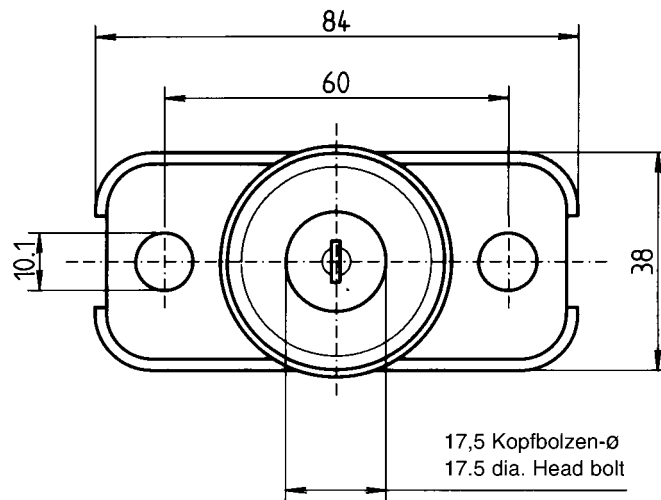
VE 5 St.

**580 0098**

**Interior lock handle**

with cover and grooved bush for  
 600 0213 / 0214 / 0503 / 0504  
 Handle length 95 mm  
 Handle: chrome-plated die-cast Zn  
 Cover: black PVC  
 88 g/each

S.U. 5



**600 0651**

**Haubenverschluss**

für Handbetätigung  
 Oberteil: Stahl verzinkt und chromatiert  
 138 g/St.

VE 1 St.

Gesondert bestellen:  
 Haubenverschlüsse, Unterteile, 600 0649 / 0650

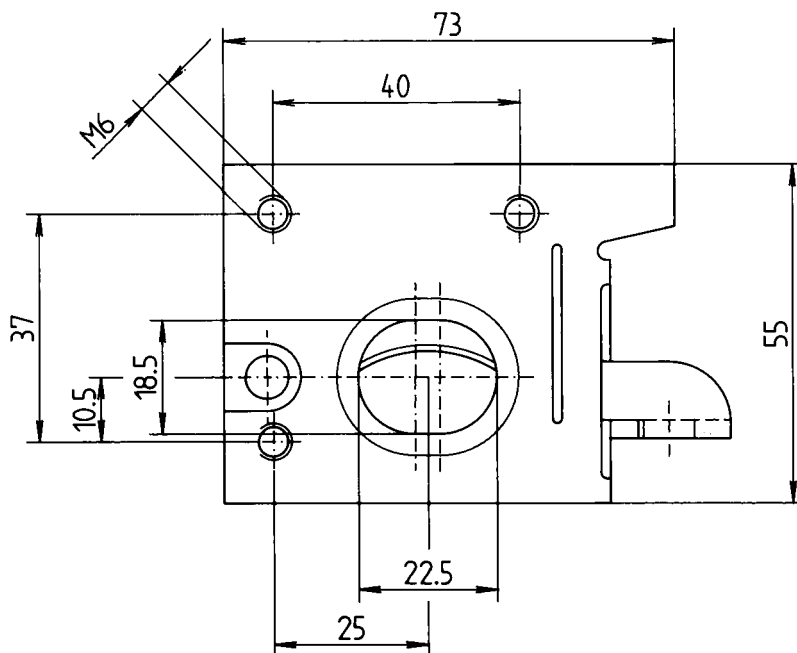
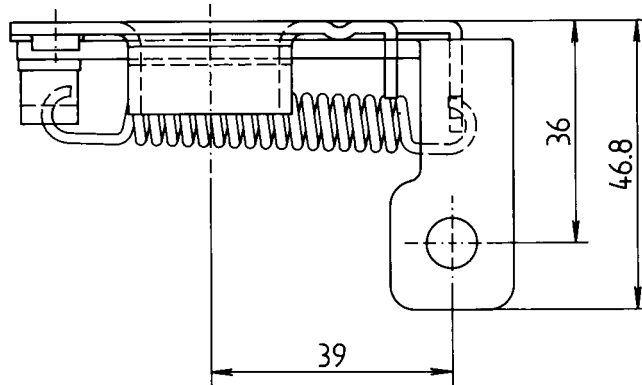
**600 0651**

**Bonnet lock**

for manual operation  
 Upper part: Zinc-plated and chromated steel  
 138 g/each

S.U. 1

Order separately:  
 Bonnet locks, lower parts, 600 0649 / 0650



**600 0650**

### Haubenverschluss

für Handbetätigung  
 Unterteil: Stahl verzinkt und chromatiert  
 112 g/St.

VE 1 St.

Gesondert bestellen:  
 Haubenverschluss, Oberteil, 600 0651

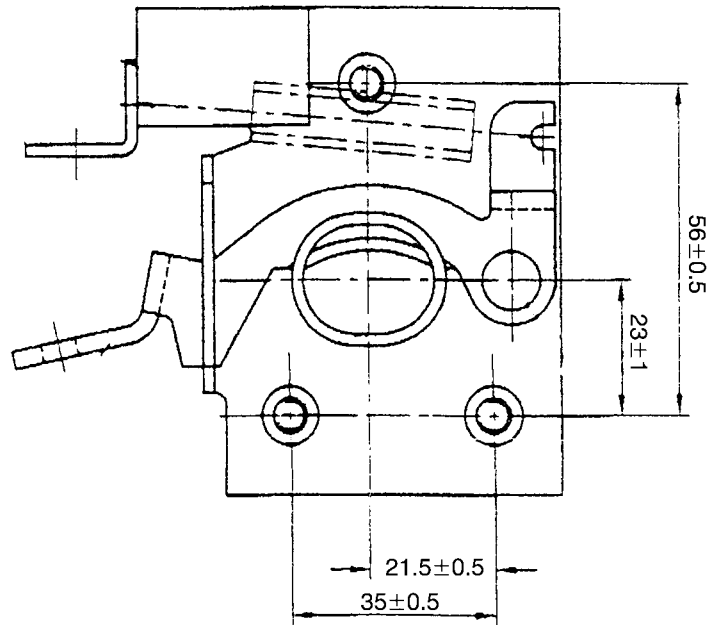
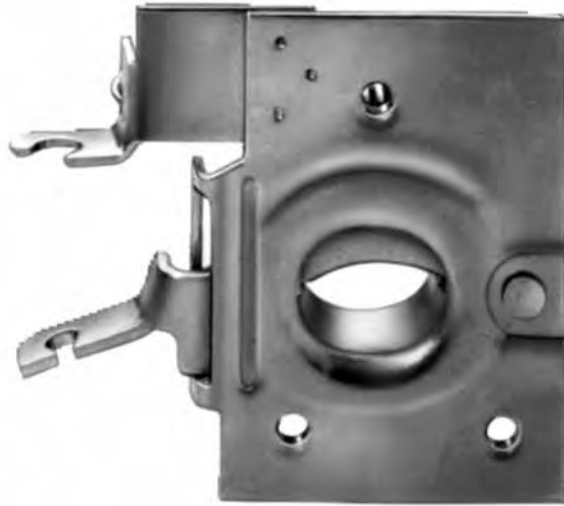
**600 0650**

### Bonnet lock

for manual operation  
 Lower part: Zinc-plated and chromated steel  
 112 g/each

S.U. 1

Order separately:  
 Bonnet lock, upper part, 600 0651



**600 0649**

**Haubenverschluss**

für Bowdenzug-Entriegelung  
 Unterteil: Stahl verzinkt und chromatiert  
 153 g/St.

VE 1 St.

Gesondert bestellen:  
 Haubenverschluss, Oberteil, 600 0651

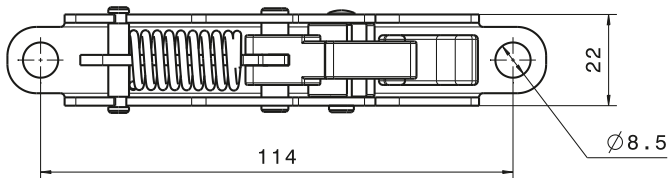
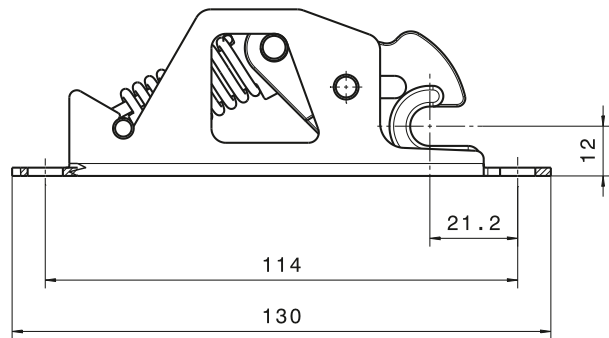
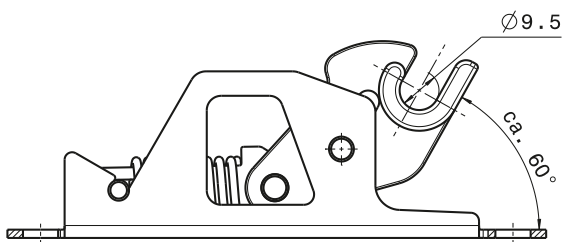
**600 0649**

**Bonnet lock**

for Bowden controlled unlocking  
 Lower part: Zinc-plated and chromated steel  
 153 g/each

S.U. 1

Order separately:  
 Bonnet lock, upper part, 600 0651



**600 0660**

**Aufreißschloss**

Stahl rostfrei, PA 6  
 Öffnungskraft: 100 N ± 10  
 Schließkraft: 70 N ± 10  
 138 g/St.

VE 10 St.

**600 0660**

**Spring bolt lock**

Stainless steel, PA 6  
 Operating force: 100 N ± 10  
 Locking force: 70 N ± 10  
 138 g/each

S.U. 10

## Tankverschluss

(auf Anfrage)

## Fuel tank cap

(on request)



Art. Nr. / Part no.	Beschreibung / Description	Durchmesser / Dia.
600 N100	für Schließzylinder, ventilbelüftet for locking cylinder, with valve ventilation	80 mm
600 N101	nicht abschließbar, ventilbelüftet without locking cylinder, with valve ventilation	80 mm
600 N104	nicht abschließbar, ohne Lüftung without locking cylinder, without ventilation	60 mm
600 N102	für Schließzylinder, ventilbelüftet for locking cylinder, with valve ventilation	60 mm
600 N103	nicht abschließbar, ventilbelüftet without locking cylinder, with valve ventilation	60 mm

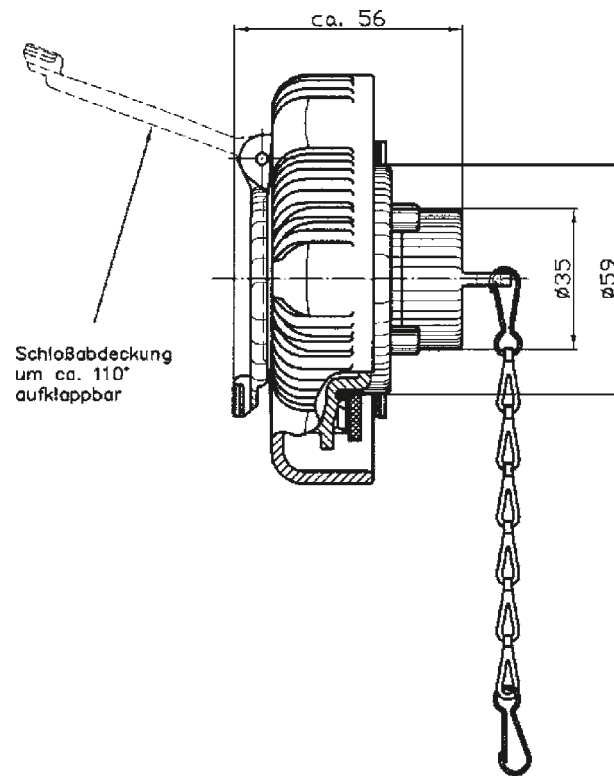
Gesondert bestellen: Schließzylinder und Schlüssel siehe Seite 4 oder 5.

Order separately: locking cylinder and key refer to page 4 or 5.

Zubehör / Accessories		
600 N105	Tankverschluss für Kraftstofftank aus Metall Fuel tank cap for metal fuel tank	80 mm
600 N106	Tankverschluss für Kraftstofftank aus Kunststoff Fuel tank cap for plastic fuel tank	80 mm
600 N107	Tankverschluss für Kraftstofftank aus Metall Fuel tank cap for metal fuel tank	60 mm
600 N108	Tankverschluss für Kraftstofftank aus Kunststoff Fuel tank cap for plastic fuel tank	60 mm
600 N109	Tankverschluss für Kraftstofftank aus Kunststoff Fuel tank cap for plastic fuel tank	60 mm
600 N110	Tankverschluss mit Messing Sieb Fuel tank cap with brass filter	80 mm
600 N111	Tankverschluss mit NIRO Sieb Fuel tank cap with filter made of 1.4301	60 mm

## Tankverschlüsse

## Fuel tank cap



### Technische Daten

Mit Unter- und Überdruckventil oder ohne Lüftung

Überdruck: Kraftstoff-Dichtheit bis 15 kPa (0,15 bar)  
ab 25 kPa (0,25 bar) Entlüftung durch Ventil

Unterdruck: Kraftstoff-Dichtheit bis 2 kPa (0,02 bar)

Geprüft nach Richtlinie 2000/8/EG

### Technical data

With pressure regulation valve for over- and under-pressure or without ventilation

Over pressure: Gas-Pressure-Tightness up to 15 kPa (0.15 bar) from 25 kPa (0.25 bar) ventilation through the valve

Under pressure: Gas-Pressure-Tightness up to 2 kPa (0.02 bar)

Tested according to standard 2000/8/EG





# Motorhauben- und Tankverschlüsse Bonnet catches and tank caps

**HAPPICH-RIU S.A.**

Avda. Maresme, 44 3<sup>o</sup>-1<sup>a</sup>  
08918 Badalona  
Spain

Phone +34 933 037 600  
Fax +34 933 037 610  
E- Mail [acriu@acriu.com](mailto:acriu@acriu.com)

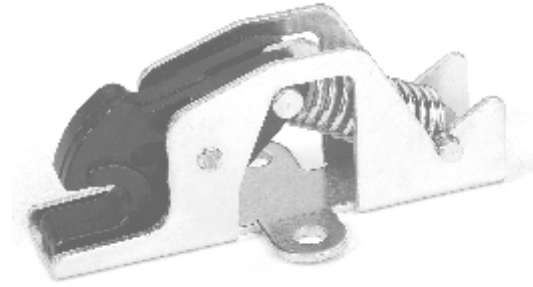
[www.happich-riu.com](http://www.happich-riu.com)



## CIERRES DE PRESION

\*

## PRESSURE LOCKS



**0337 00**  
 CIERRE DE PRESION PARA TRAMPILLA SIN CERRADERO  
 PRESSURE LOCK WITHOUT CATH

**0337 10**  
 CIERRE DE PRESION PARA TRAMPILLA CON CERRADERO  
 PRESSURE LOCK WITH CATH

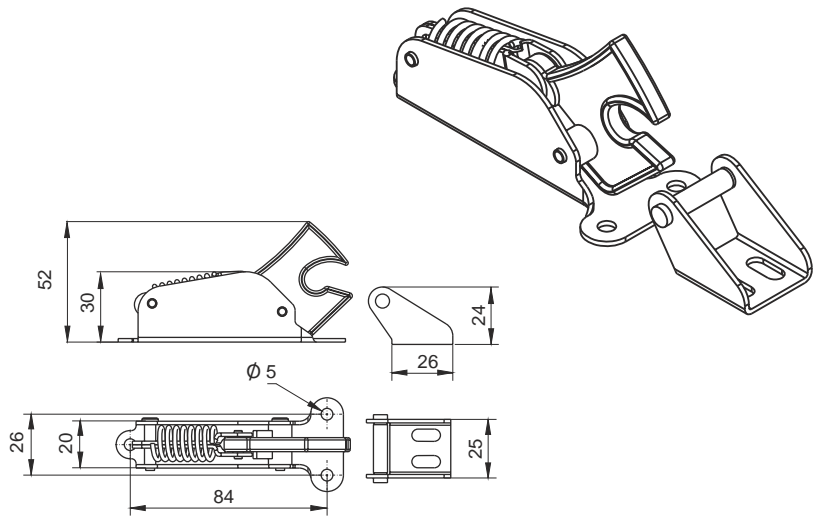
Acero cincado, pestillo de nylon  
 Zinc plated steel nylon catch

**0347 10** (INOX - S.S.)  
 CIERRE DE PRESION PARA TRAMPILLA CON CERRADERO  
 PRESSURE LOCK WITH CATH

Acero inoxidable, pestillo de nylon  
 Stainless steel, nylon catch

Resistencia aproximada 6 kg  
 6 kg approx strenght

Peso / Weigth 115 g



**0337 20**  
 CIERRE DE PRESION  
 PRESSURE LOCK  
 Resistencia aproximada 6 kg  
 6 kg strenght approx

**0337 23**  
 CIERRE DE PRESION  
 PRESSURE LOCK  
 Resistencia aproximada 9,3 kg  
 9,3 kg aprox strenght.

Acero cincado plata, pestillo de nylon  
 Zinc plated steel, nylon slam

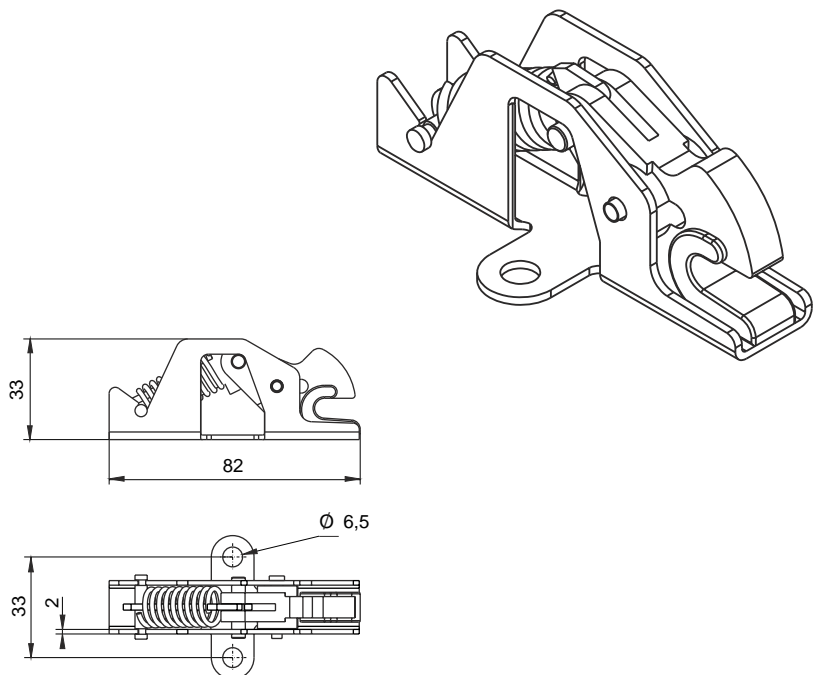
**0337 26**  
 CIERRE DE PRESION  
 PRESSURE LOCK  
 Acero zinc niquel negro, pestillo de nylon  
 Black zinc nickel plating steel, nylon slam

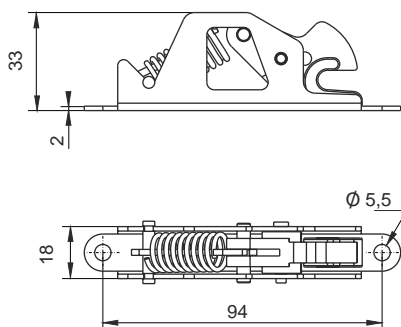
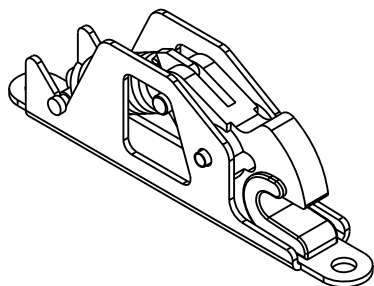
Resistencia aproximada 6 kg  
 6 kg strenght approx

**0347 20** (INOX - S.S.)  
 CIERRE DE PRESION  
 PRESSURE LOCK  
 Acero inoxidable, pestillo de nylon  
 Stainless steel, nylon catch

Resistencia aproximada 6 kg  
 6 kg strenght approx

Peso / Weigth 65 g





**0337 21**  
CIERRE DE PRESION ESTRECHO  
STRAIT PRESSURE LOCK

Resistencia aproximada 6 kg  
6 kg strenght approx

**0337 24**  
CIERRE DE PRESION ESTRECHO  
STRAIT PRESSURE LOCK

Muelle duro / Hard spring

Resistencia aproximada 9,3 kg  
9,3 kg strenght approx

Acero cincado, pestillo de nylon  
Zinc plated, nylon catch

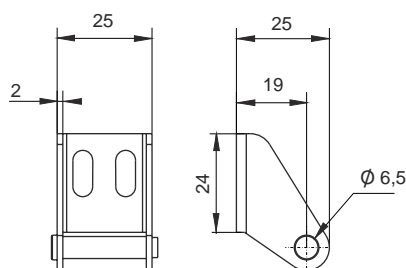
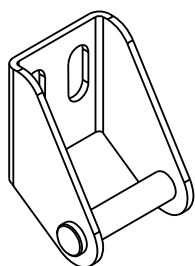
INOX - S.S.

**0347 21**  
CIERRE DE PRESION ESTRECHO  
STRAIT PRESSURE LOCK

Acero inoxidable, pestillo de nylon  
Stainless steel, nylon catch

Resistencia aproximada 6 kg  
6 kg strenght approx

Peso / Weigth 70 g



**0337 25**  
CERRADERO PARA  
CIERRE 0337 20 / 21 / 23 / 24  
SPARE CATH FOR 0337 20  
21 / 23 / 24  
PRESSURE LOCKS

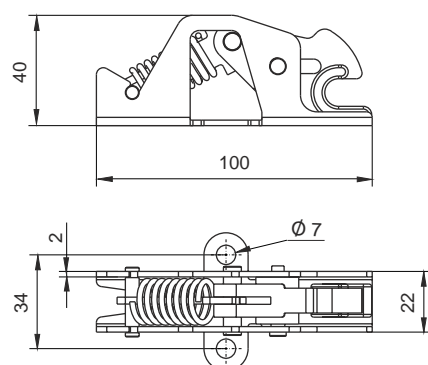
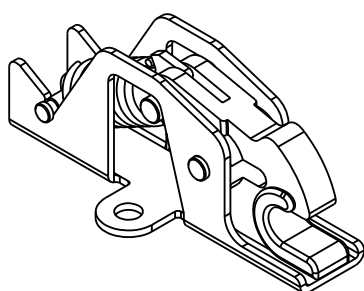
Acero cincado  
Zinc plated steel

INOX - S.S.

**0347 25**  
CERRADERO PARA  
CIERRE 0347 20 / 21  
SPARE STRIKE FOR 0347 20  
& 0347 21 PRESSURE LOCK

Acero inoxidable  
Stainless steel

Peso / Weigth 20 g



**0337 40**  
CIERRE DE PRESION  
PRESSURE LOCK

Resistencia aproximada 10 kg  
10 kg strenght approx

**0337 47**  
CIERRE DE PRESION  
PRESSURE LOCK

Resistencia aproximada 17,5 kg  
17,5 kg strenght approx

Acero cincado, pestillo de nylon  
Zinc plated steel, nylon catch

INOX - S.S.

**0347 40**  
CIERRE PRESION  
PRESSURE LOCK

Resistencia aproximada 10 kg  
10 kg strenght approx

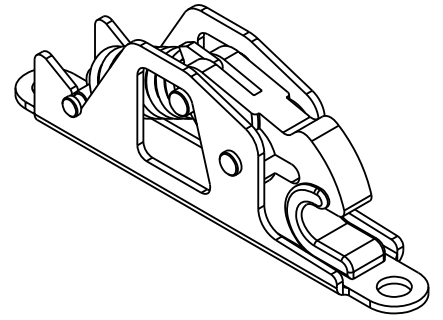
Acero inoxidable, pestillo nylon  
Stainless steel, nylon catch

Peso / Weigth 130 g



**0337 41**  
CIERRE PRESION ESTRECHO  
NARROW PRESSURE LOCK

Resistencia aproximada 10 kg  
10 kg strenght approx

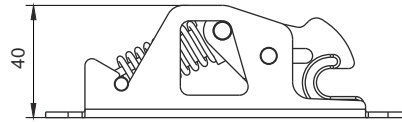


**0337 48**  
CIERRE PRESION ESTRECHO  
NARROW PRESSURE LOCK

Resistencia aproximada 17,5 kg  
17,5 kg strenght approx

Acero cincado, pestillo nylon  
Zinc plated steel, nylon catch

Peso / Weigth 130 g



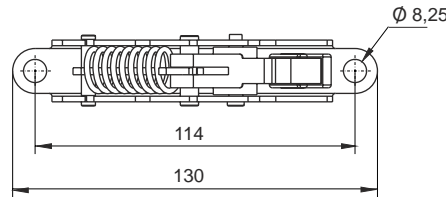
**0347 41**  
CIERRE PRESION ESTRECHO  
NARROW PRESSURE LOCK

INOX - S.S.

Resistencia aproximada 10 kg  
10 kg strenght approx

Acero inoxidable, pestillo nylon  
Stainless steel, nylon catch

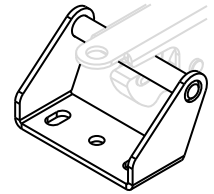
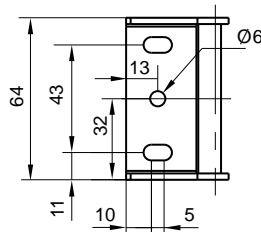
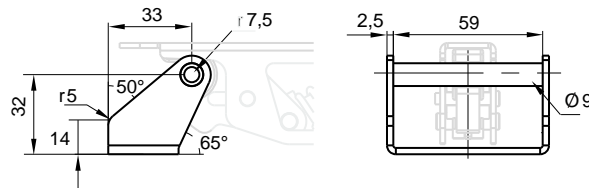
Peso / Weigth 130 g



**0337 36**  
CERRADERO PARA  
CIERRE 0337 40/41/47/48  
SPARE CATCH FOR 0337  
40/41/47/48  
PRESSURE LOCKS

Acero cincado  
Zinc plated steel

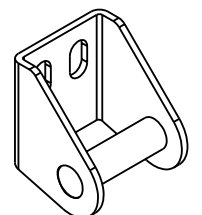
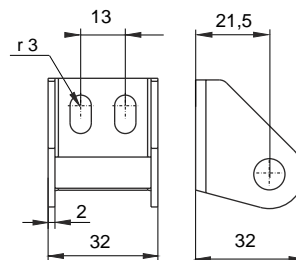
Peso / Weigth 50 g



**0337 45**  
CERRADERO PARA  
CIERRE 0337 40/41/47/48  
SPARE CATCH FOR  
0337 40/41/47/48  
PRESSURE LOCKS

Acero cincado  
Zinc plated steel

Peso / Weigth 20 g

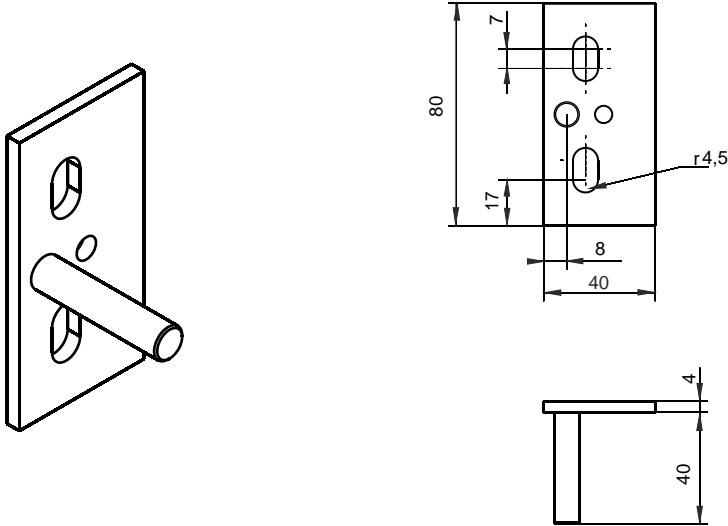


**0347 45**  
CERRADERO PARA  
CIERRE 0347 40/41  
SPARE CATCH FOR 0347 40/41  
PRESSURE LOCKS

INOX - S.S.

Acero inoxidable  
Stainless steel

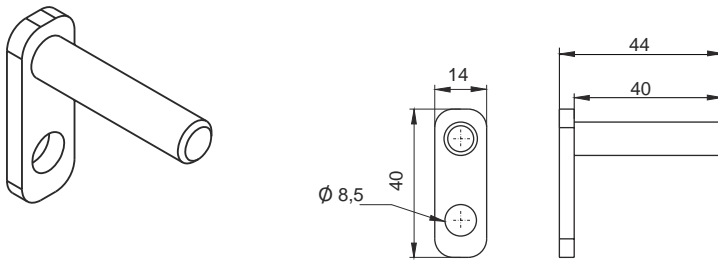
Peso / Weigth 20 g



**0416 30**  
CERRADERO PARA CIERRES  
DE PRESION 0337 40/41/47/48  
0337 40/41/47/48 PRESSURE LOCKS  
STRIKE PIN

Acero cincado  
Zinc plated steel

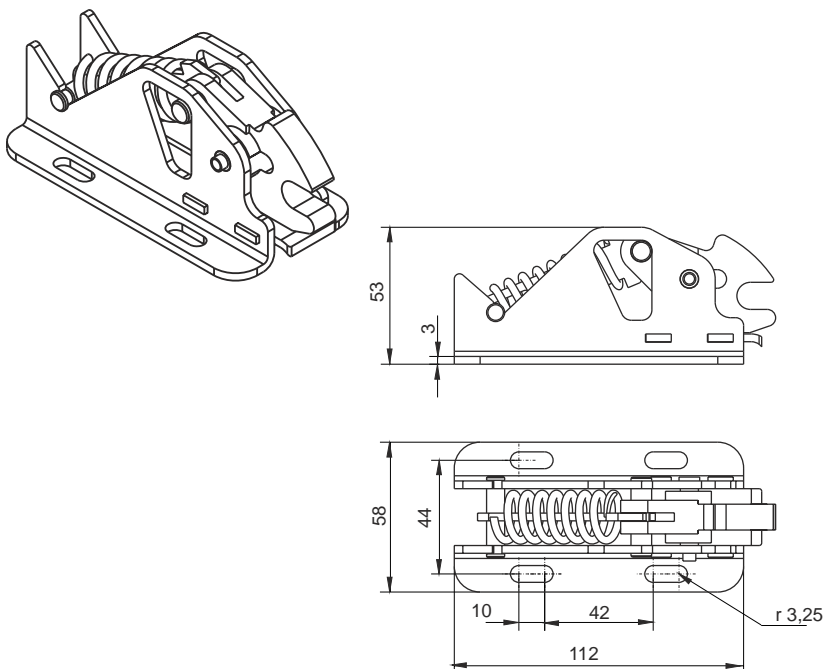
Peso / Weigh 110 g



**0337 46**  
CERRADERO PARA CIERRE  
0337 40/41/47/48  
SPARE CATCH FOR  
0337 40/41/47/48  
PRESSURE LOCK

Acero cincado negro  
Black zinc plated steel

Peso / Weigh 34 g



**0337 50**  
CIERRE PRESION  
PRESSURE LOCK

Acero cincado, pestillo nylon  
Zinc plated steel, nylon catch

Resistencia aproximada 22 kg  
22 kg strenght approx

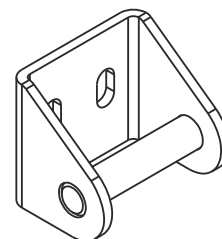
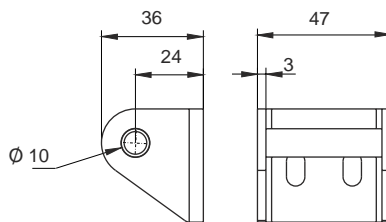
Peso / Weigh 355 g



**0337 55**  
CERRADERO PARA  
CIERRE 0337 50  
SPARE STRIKE FOR 0337 50  
PRESSURE LOCK

Acero cincado  
Zinc plated steel

Peso / Weigh 105 g

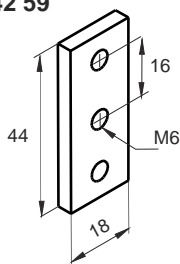


**7142 59**  
PLETINA ROSCADA 44 x 18  
THREADED PLATE 44 x 18

Acero cincado plata  
Zinc plated steel

Peso / Weigh 22 g

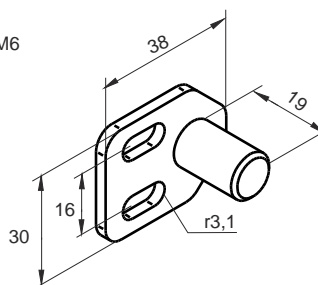
7142 59



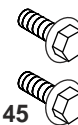
**0337 38**  
CERRADERO AJUSTABLE  
SPARE ADJUSTABLE CATCH

Acero cincado plata  
Zinc plated steel

Peso / Weigh 36 g



0337 38



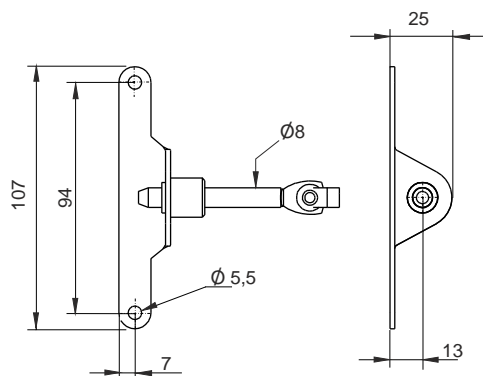
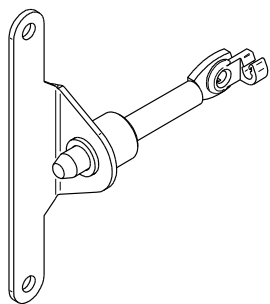
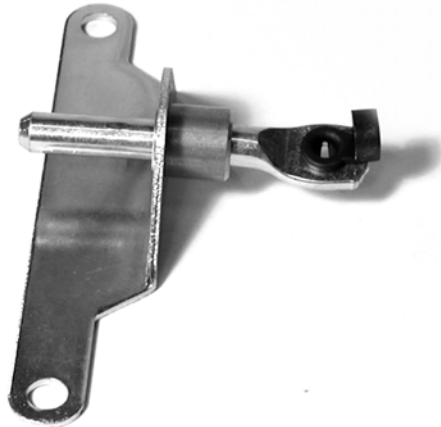
1831 45  
1831 86



## SISTEMAS DE BLOQUEO

\*

## LOCKING SYSTEM



### 0338 21

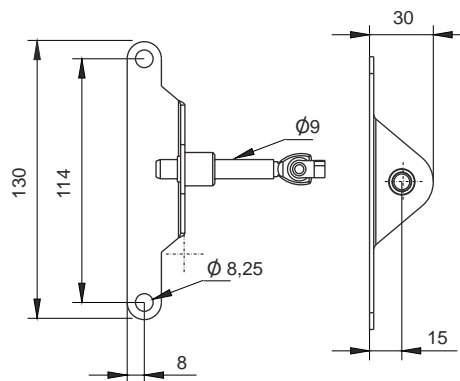
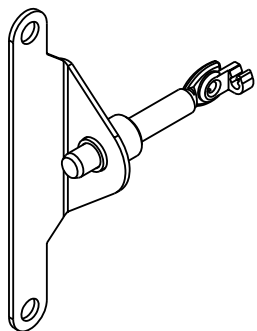
SISTEMA DE BLOQUEO PARA CIERRES  
0337 21 / 0337 24 / 0347 21  
DESDE MANECILLA 0939 00  
O DESDE CILINDRO CON LLAVE  
LOCKING SYSTEM FOR PRESSURE  
LOCK 0337 21 / 0337 24 / 0347 21  
BY HANDLE 0939 00  
OR KEY BARREL OPERATED

AMBAS MANOS / BOTH HANDS

Acero cincado + latón  
Zinc plated Steel & brass

Peso / Weight 160 g

DIBUJO MANO IZQUIERDA  
LEFT HAND DRAWING



### SISTEMA DE BLOQUEO PARA CIERRES

0337 41 / 0337 48 / 0347 41  
DESDE CILINDRO CON LLAVE  
LOCKING SYSTEM FOR PRESSURE LOCK  
0337 41 / 0337 48 / 0347 41 KEY BARREL  
OPERATED

### 0338 41

LADO IZQUIERDO / LEFT HAND ROD  
Acero cincado + latón / Zinc plated steel & brass

### 0338 42

LADO DERECHO / RIGHT HAND ROD  
Acero cincado + latón / Zinc plated steel & brass

### 0338 45

LADO IZQUIERDO / LEFT HAND ROD  
Acero inoxidable + latón / Stainless steel & brass

INOX - S.S.

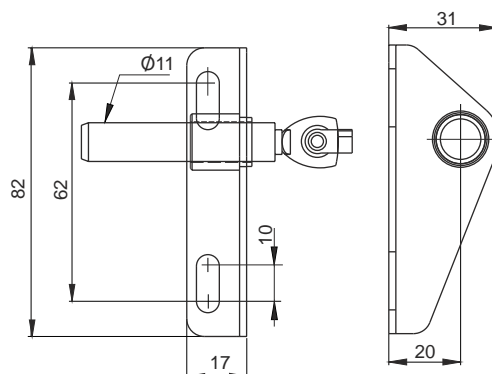
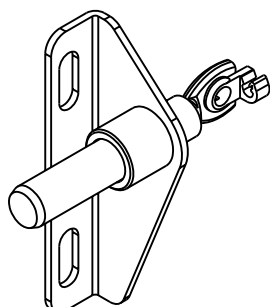
### 0338 46

LADO DERECHO / RIGHT HAND ROD  
Acero inoxidable + latón / Stainless steel & brass

INOX - S.S.

Peso / Weight 160 g

DIBUJO MANO IZQUIERDA  
LEFT HAND DRAWING



### SISTEMA DE BLOQUEO

PARA CIERRE 0337 50  
DESDE MANECILLA 0939 00.  
O DESDE EL CILINDRO 6471 XX / 6481 XX  
LOCKING SYSTEM FOR PRESSURE LOCK  
0337 50 COMBINED HANDLE 0939 00  
OR KEY BARREL 6471 XX / 6481 XX  
OPERATED

### 0338 51

LADO IZQUIERDO / LEFT HAND ROD

### 0338 52

LADO DERECHO / RIGHT HAND ROD

Acero cincado+ latón / Zinc plated steel&brass

Peso / Weight 142 g



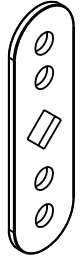
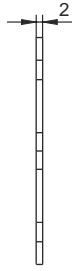
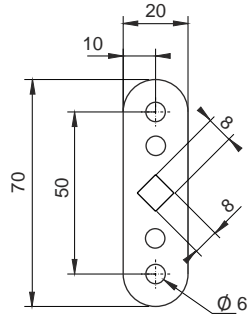
INOX - S.S.

**0338 60**  
BIELA  
SWINGING CONNECTING  
PIECE

Acero inoxidable  
Stainless steel

Peso / Weigth 22 g

Incluye 2 grapas terminales Ø 4 mm  
0923 65  
0923 65 Ø 4 mm, includes terminal



0923 65

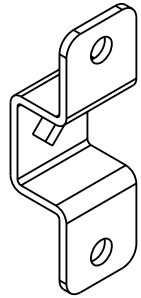
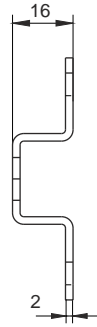
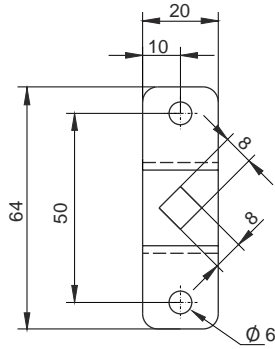
INOX - S.S.

**0338 80**  
BIELA  
SWINGING CONNECTING  
PIECE

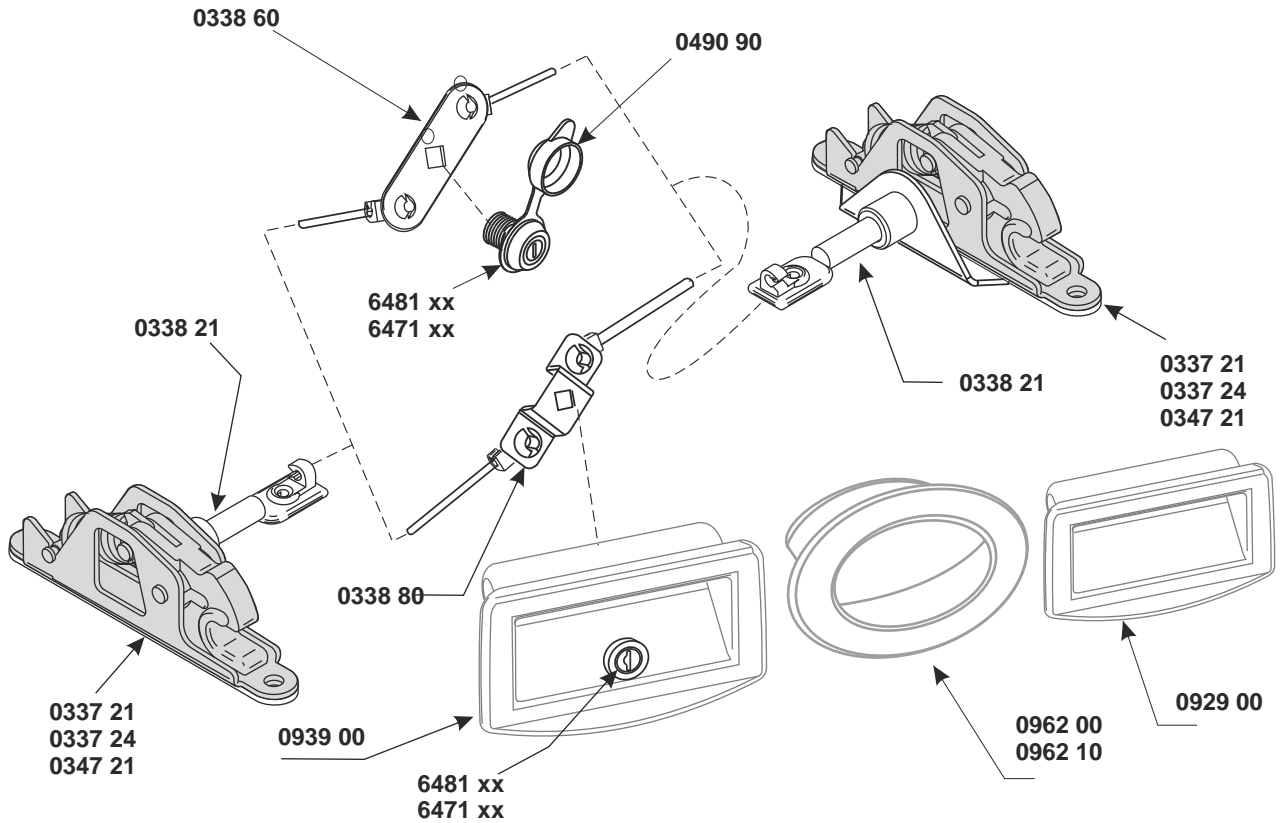
Acero inoxidable  
Stainless steel

Peso / Weigth 26g

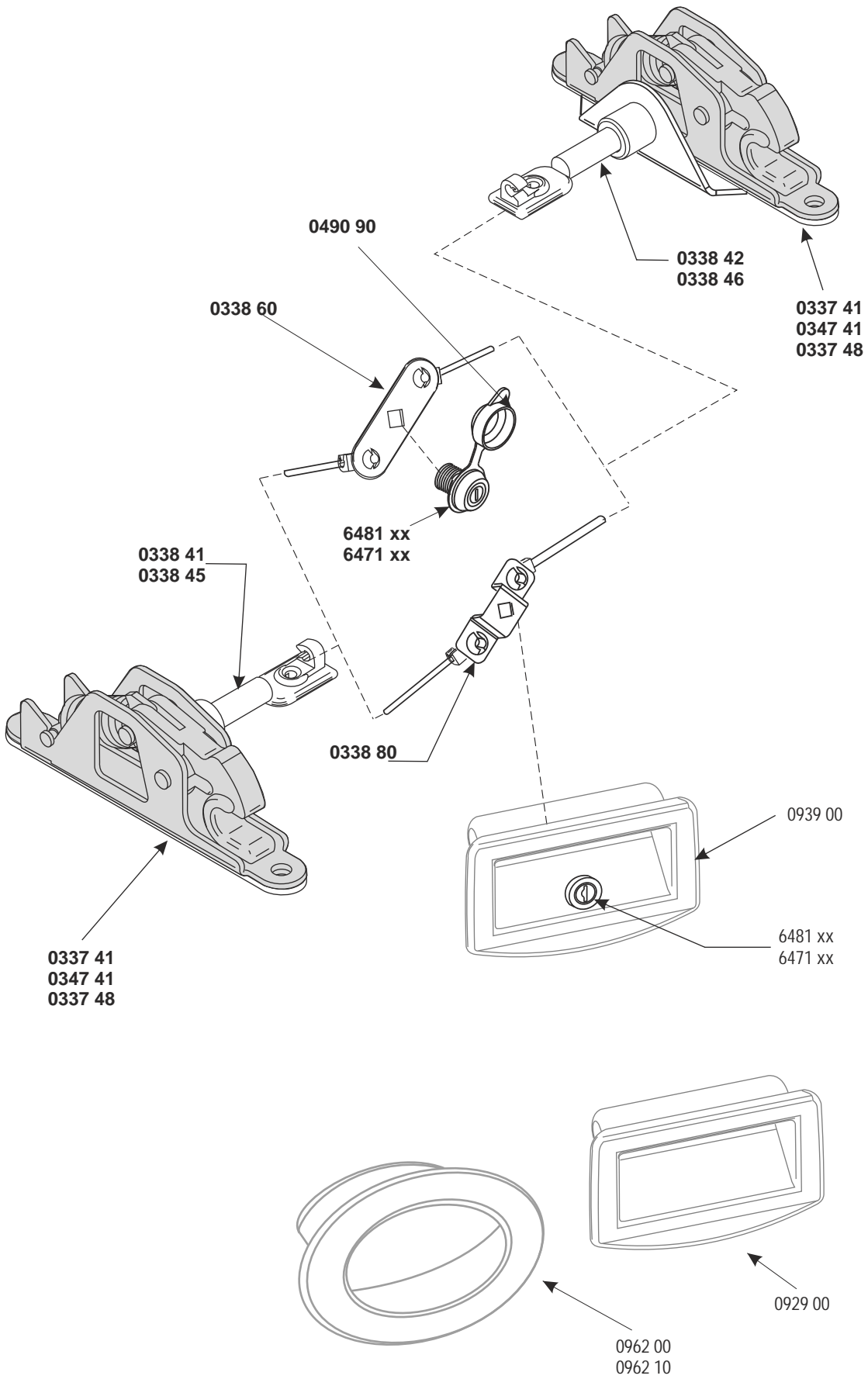
Incluye 2 grapas terminales Ø 4 mm  
0923 65  
0923 65 Ø 4 mm, includes terminal

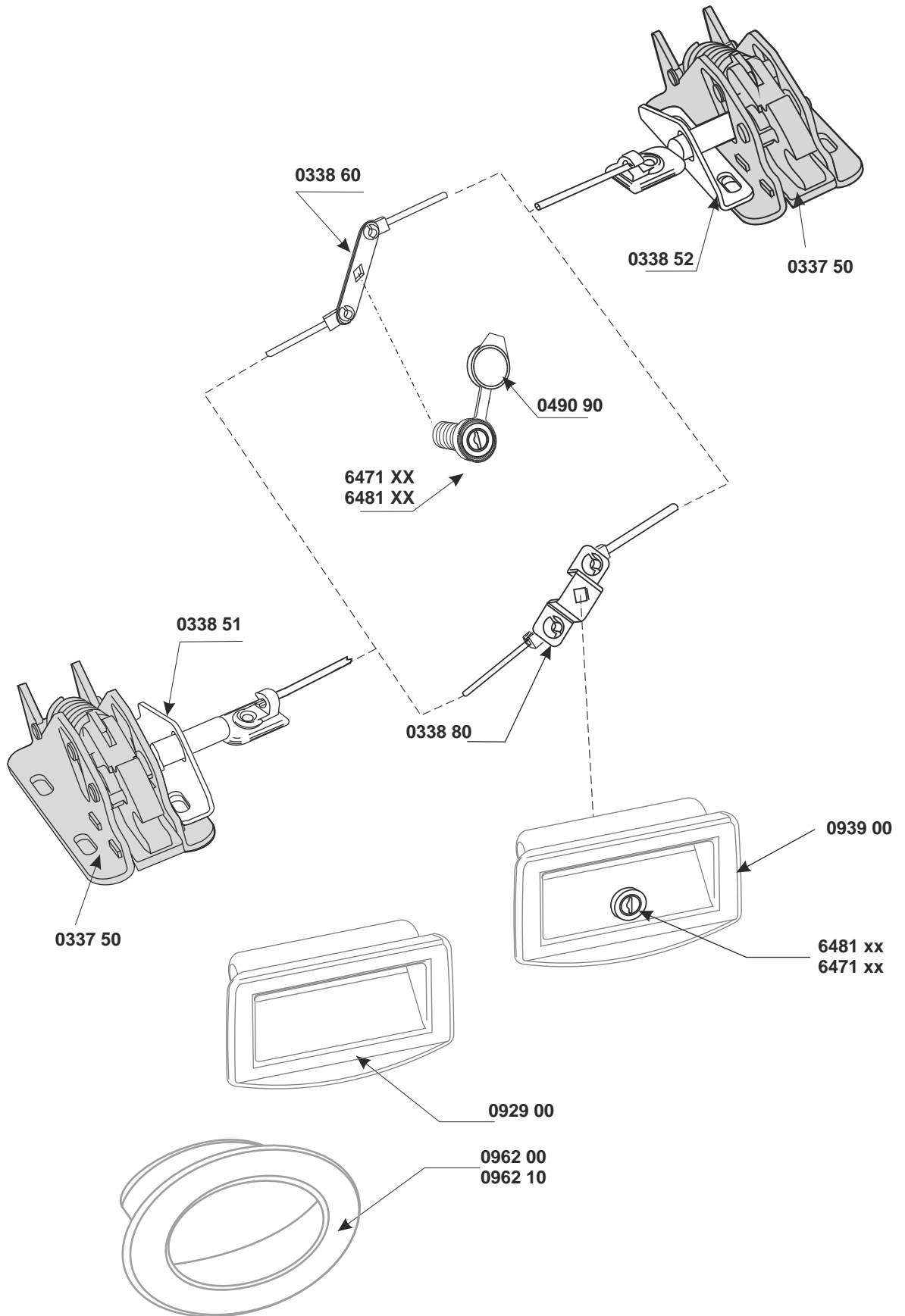


0923 65







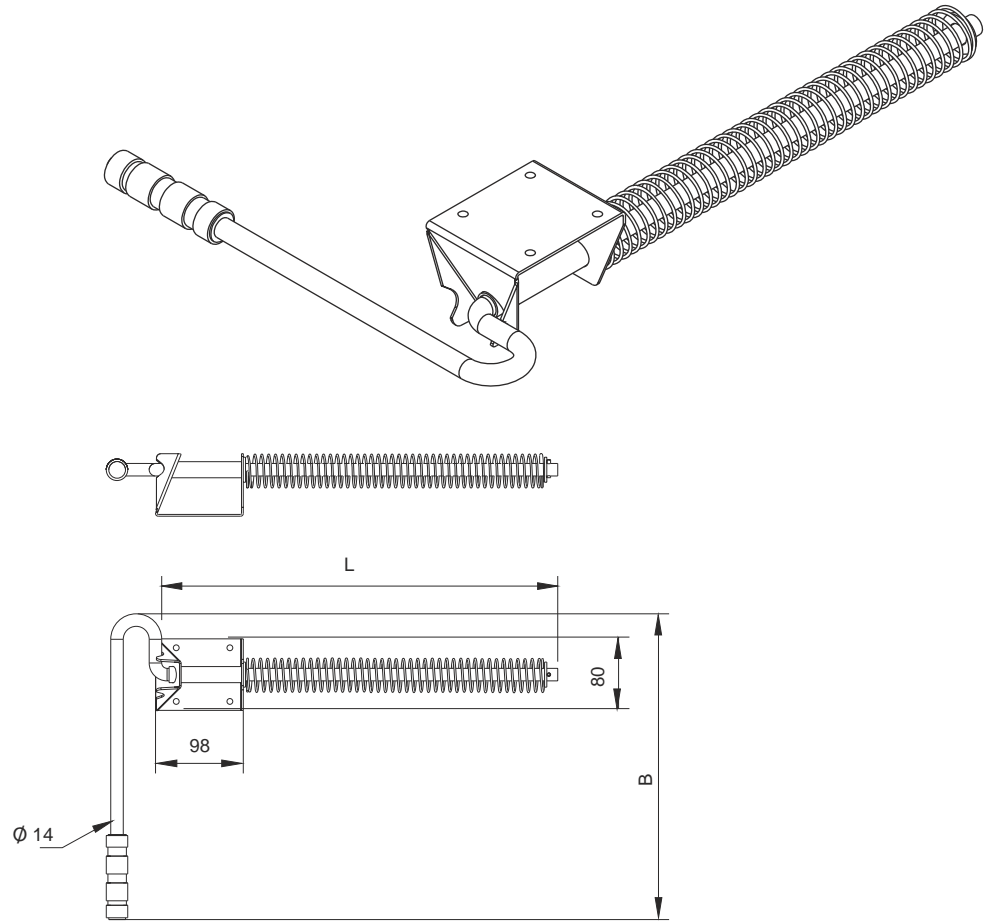




**0272 00**  
RETENEDOR DE BRAZO  
MUELLE EXTERIOR  
SPRING LOADED DOOR  
RETAINER  
B = 340 mm ; L = 500 mm

Acero cincado  
Zinc plated steel

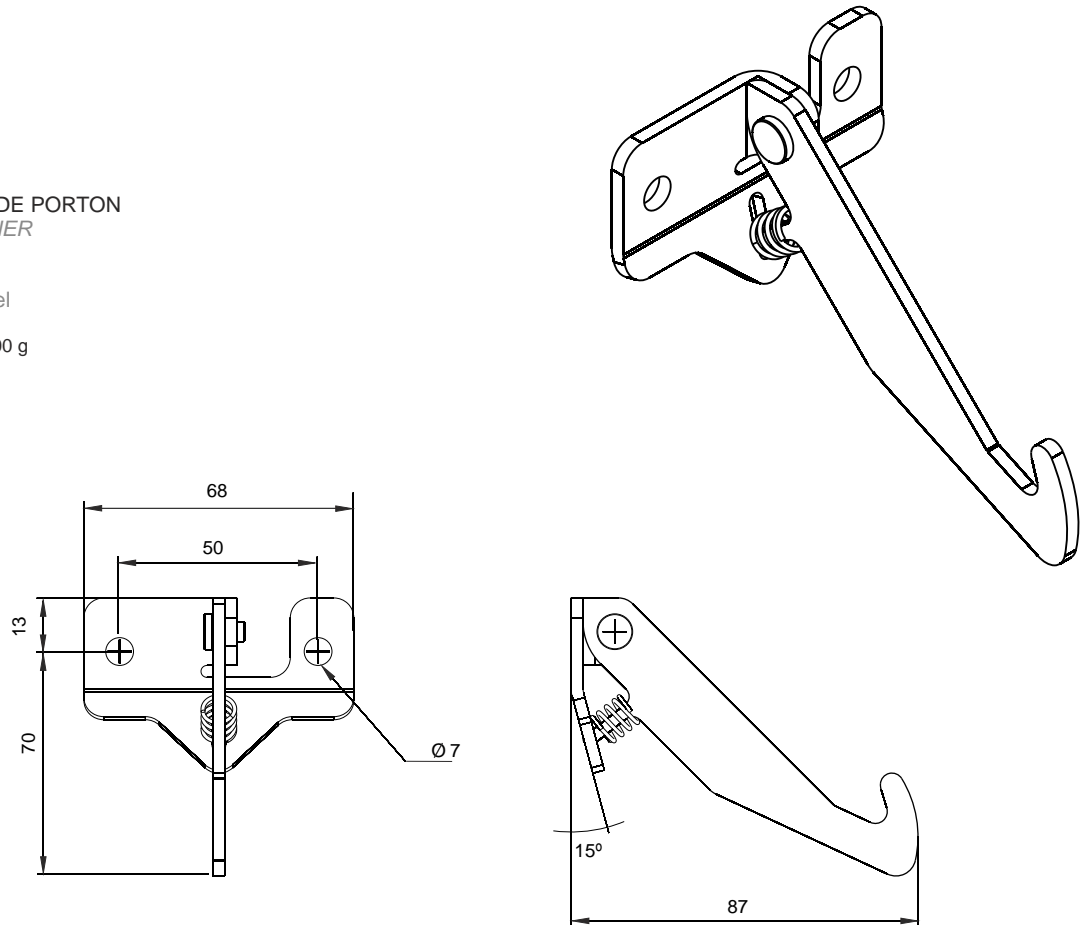
Peso / Weigth 1900 g

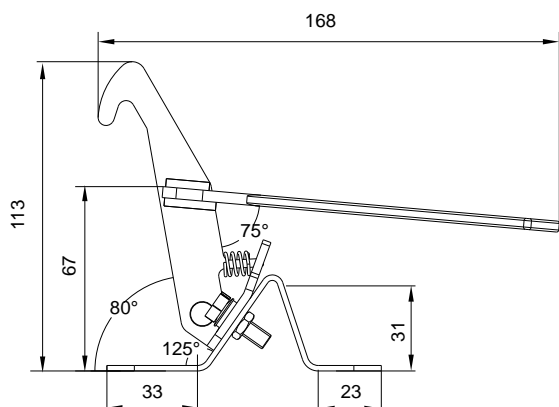
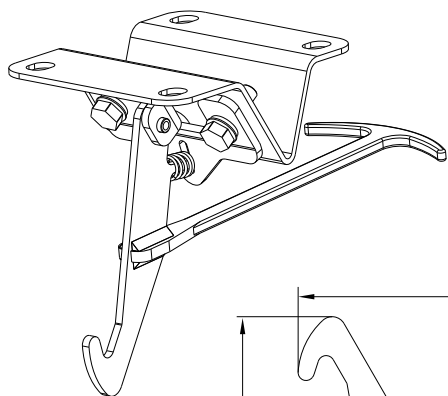


**0646 50**  
RETENEDOR DE PORTON  
DOOR RETAINER

Acero cincado  
Zinc plated steel

Peso / Weigth 100 g

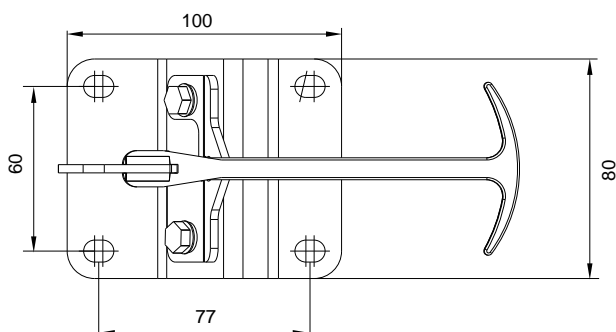




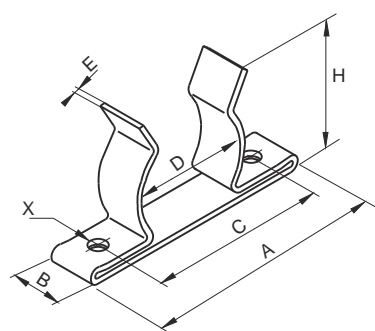
**0646 51**  
 RETENEDOR DE PORTON  
 CON TIRADOR  
 DOOR RETAINER WITH HANDLE

Acero cincado  
 Zinc plated steel

Peso / Weigh 200 g

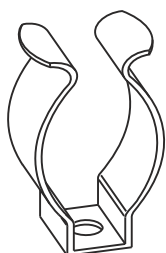


**GRAPAS DE ACERO CROMADAS**  
 CHROMED STEEL CLAMP



CODIGO CODE	Medida nominal Nominal size	Peso Weigth	MEDIDAS / SIZES						
			A	B	H	C	D	E	X
<b>0750 04</b>	4 - 5 mm	2 g	21	10	9	11	4	0,40	3,3
<b>0750 06</b>	6 - 7 mm	2,5 g	23	10	12	13	5,5	0,50	3,3
<b>0750 08</b>	8 - 9 mm	4 g	25	10	14	15	7,8	0,50	3,4
<b>0750 10</b>	10 - 11 mm	4 g	27	10	16	17	9,7	0,50	3,4
<b>0750 12</b>	12 - 13 mm	5 g	29	14	17,5	19	11,5	0,65	3,4
<b>0750 14</b>	14 - 15 mm	6 g	30	14	19	20	13	0,65	3,4
<b>0750 16</b>	16 - 17 mm	6 g	33	14	20	21	15	0,65	3,4
<b>0750 18</b>	18 - 19 mm	7 g	35	14	23	24	17	0,65	3,4
<b>0750 20</b>	20 - 21 mm	12 g	37	18	27	25	19	0,75	4,1
<b>0750 22</b>	22 - 23 mm	12 g	40	18	29	28	21	0,75	4,1
<b>0750 24</b>	24 - 25 mm	14 g	45	18	29	31	24	0,75	4,1
<b>0750 27</b>	27 - 30 mm	16 g	47	18	32	33	26	0,75	4,1
<b>0750 32</b>	32 - 35 mm	16 g	51	18	34	38	28	0,75	4,1

**GRAPAS 1 TALADRO**  
 CLAMP 1 DRILLED HOLE  
 Acero templado Niquelado  
 Plated & tempered steel



CODIGO CODE	DIAMETRO Diameter	PESO Weigth
<b>0751 15</b>	15	2 g
<b>0751 20</b>	20	4 g
<b>0751 25</b>	25	4 g
<b>0751 30</b>	30	7 g
<b>0751 35</b>	35	10 g



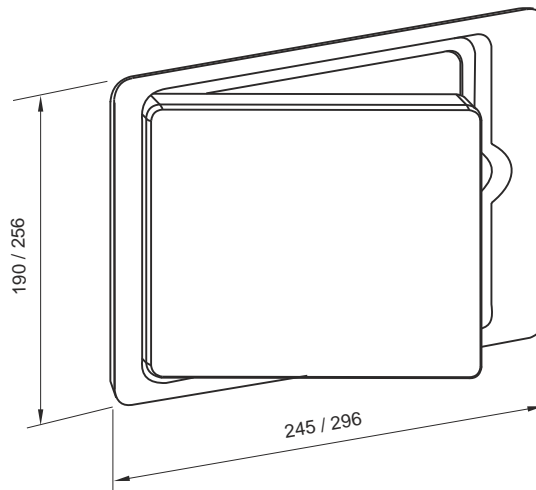
**3571 00**  
TRAMPILLA CON MUELLE  
190 x 245 mm SIN LLAVE  
FILLER FLAP 190 x 245 mm  
WITHOUT KEY

Peso / Weight 640 g

**3573 00**  
TRAMPILLA CON MUELLE  
256 x 296 mm SIN LLAVE  
FILLER FLAP 256 x 296 mm  
WITHOUT KEY

Acero galvanizado  
Galvanized steel

Peso / Weight 1060 g



**3571 11**  
TRAMPILLA CON MUELLE  
190 x 245 mm TROQUELADA  
190 x 245 mm PIERCED  
FILLER FLAP WITH SPRING

Peso / Weight 630 g

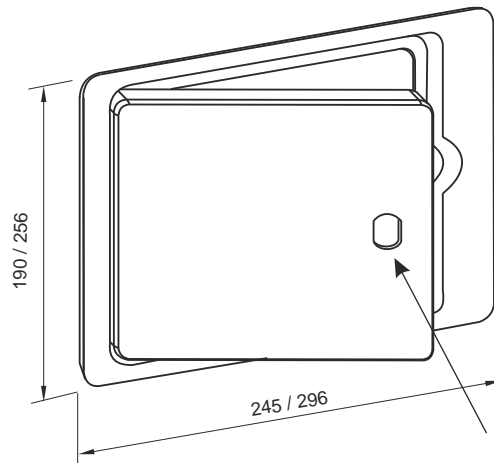
**3571 12**  
TRAMPILLA CON MUELLE  
190 x 245 mm TROQUELADA  
PARA CIERRE HAPPICH  
190 x 245 mm PIERCED  
FILLER FLAP WITH SPRING  
FOR HAPPICH KEY BARREL

Peso / Weight 630 g

**3573 11**  
TRAMPILLA CON MUELLE  
256 X 296 mm TROQUELADO  
256 X 296 mm PIERCED  
FILLER FLAP WITH SPRING

Acero galvanizado  
Galvanized steel

Peso / Weight 1050 g



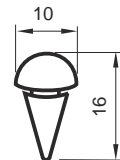
Para Cilindro con llave 6481 xx  
For Key Barrel 6481 xx

**3571 90**  
TOPE GOMA PARA TRAMPILLAS  
SPARE FILLER FLAP  
RUBBER BUFFER

Goma negro / Black rubber

Bolsas 10 unidades / In 10 pcs. Bags

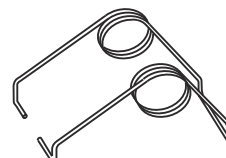
Peso por bolsa / Weight for bag 10 g

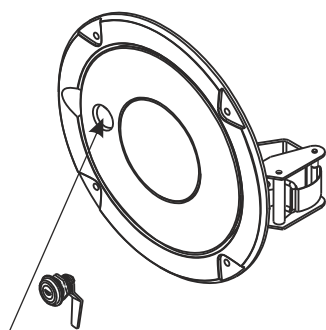


**3571 55**  
MUELLE DE RECAMBIO  
PARA TRAMPILLAS  
SPARE FILLER FLAP SPRING

Acero en bruto / Bare steel

Peso / Weight 30 g

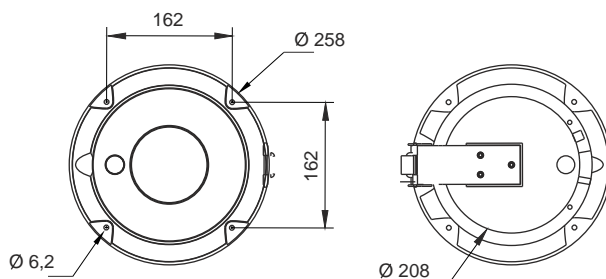




Posibilidad de: - Llaves a juego con manecillas 0900, 0901, 0940, 0930, 0932, 0939, y serie "K"  
- Personalización con logotipo

Possibility of: - Keys to combine with handles 0900, 0901, 0940, 0930, 0932, 0939 and "K" series  
- Customizable with logo

Para Cilindro con llave 6481 xx, 6471 xx  
Fits Key Barrel 6481 xx, 6471 xx



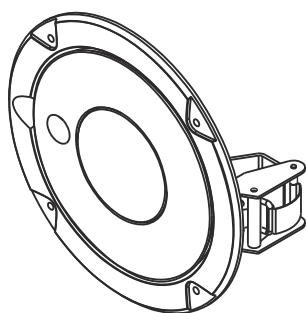
**3575 10**  
BROCAL COMBUSTIBLE PARA CILINDRO CON LLAVE  
ROUND FILLER FLAP FOR LOCKING KEY BARREL

Aluminio pintado RAL 7035  
gris metalizado  
Silver RAL 7035 enameled diecast aluminium metalized finishing

Tornillos inox suministrados  
Supplied with S.Steel screws

**3575 15**  
BROCAL COMBUSTIBLE PARA CILINDRO CON LLAVE COMO 3575 10 COLOR ESCOGIDO POR EL CLIENTE  
PEDIDO MINIMO 50 UNIDADES  
ROUND FILLER FLAP FOR LOCKING KEY BARREL AS 3575 10 WITH FINISHING COLOUR CHOOSBY CUSTOMER  
MINIMUM ORDER 50 UNITIES

Peso / Weigh 1190 g

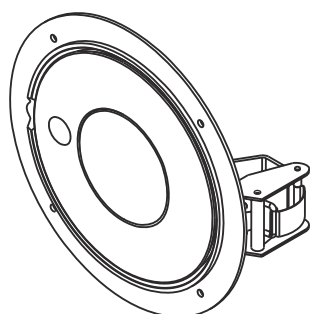
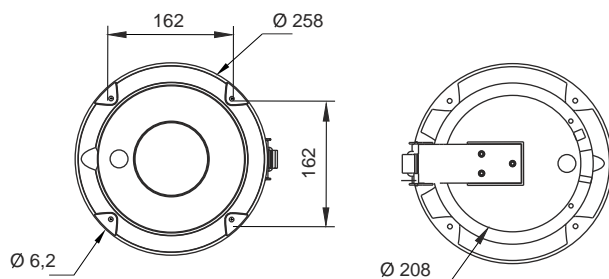


**3575 00**  
BROCAL COMBUSTIBLE  
ROUND FILLER FLAP

Aluminio pintado RAL 7035  
Gris metalizado  
Silver RAL 7035 enameled diecast aluminium metalized finishing

Tornillos inox suministrados  
Supplied with S.Steel screws

Peso / Weigh 1180 g



Posibilidad de: - Llaves a juego con manecillas 0900, 0901, 0940, 0930, 0932, 0939, y serie "K"  
- Personalización con logotipo

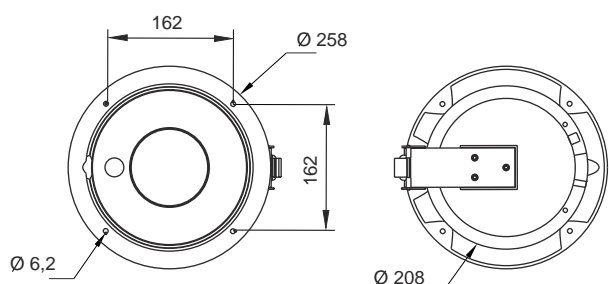
Possibility of: - Keys to combine with handles 0900, 0901, 0940, 0930, 0932, 0939 and "K" series  
- Customizable with logo

**3576 00**  
BROCAL COMBUSTIBLE ALUMINIO INSTALACION INTERIOR  
INTERIOR MOUNTING ALUMINIUM ROUND FILLER FLAP FOR FLUSH BODY SURFACE ASSEMBLY

**3576 10**  
BROCAL COMBUSTIBLE ALUMINIO INSTALACION INTERIOR PARA CILINDRO CON LLAVE  
INTERIOR MOUNTING ALUMINIUM ROUND FILLER FLAP FOR LOCKING KEY BARREL FOR FLUSH BODY SURFACE ASSEMBLY

Aluminio pintado RAL 7035  
Gris metalizado  
Silver RAL 7035 enameled diecast aluminium metalized finishing

Peso / Weigh 1100 g

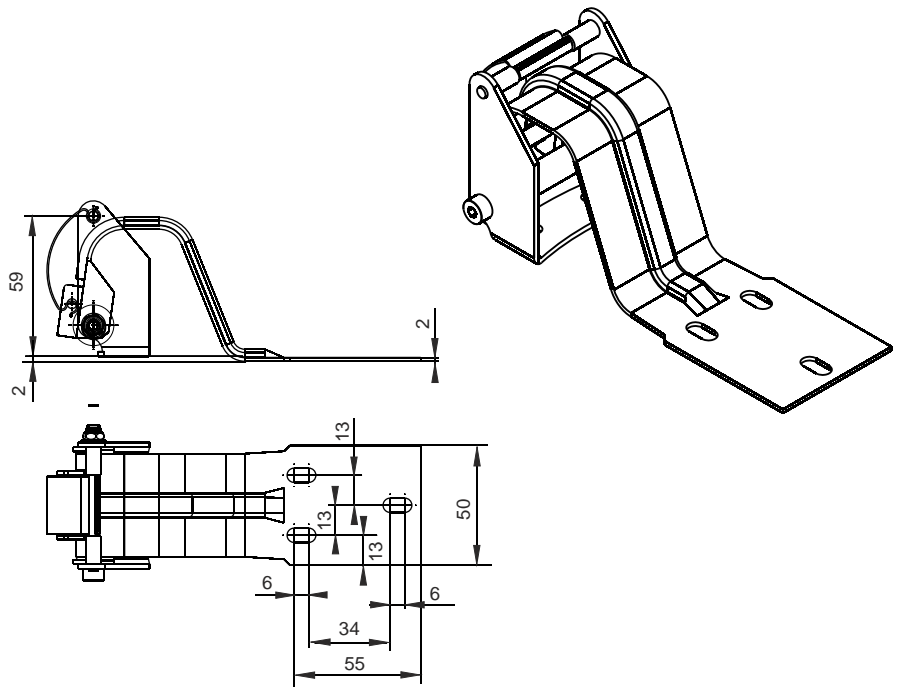




**3575 50**  
CONJUNTO BISAGRA  
CON MUELLE PARA BROCAL  
*SPARE HINGE WITH SPRING  
SET FOR FILLER FLAP*

Acero cincado  
Zinc plated steel

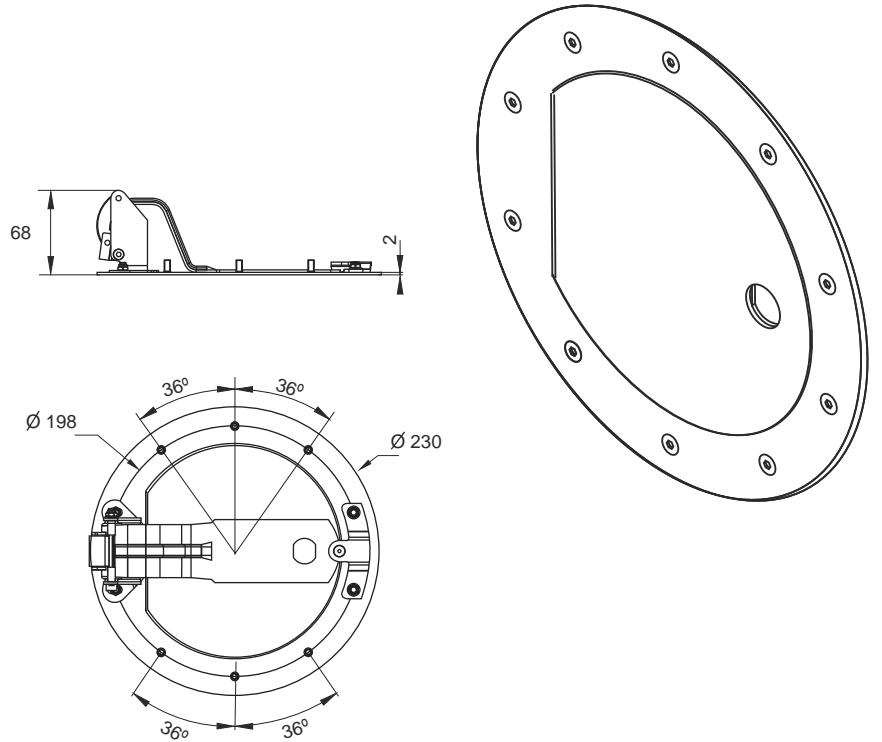
Peso / Weigh 270 g



**3570 10**  
BROCAL PARA COMBUSTIBLE  
*FILLER FLAP*

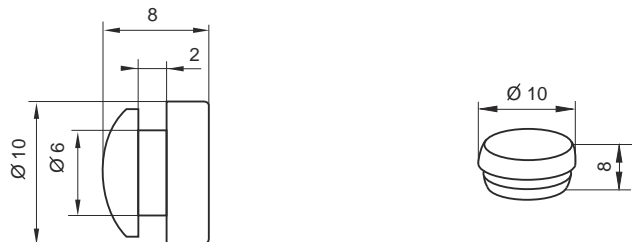
Acero imprimado  
*Primer enameled steel*

Peso / Weigh 946 g



**3575 95**  
RECAMBIO TOPE GOMA  
PARA BROCALES 3570 Y 3575  
*SPARE RUBBER BUMPER  
FOR FILLER FLAPS 3570 Y 3575*

Peso / Weigh 5 g



# Motorhauben- und Tankverschlüsse Bonnet catches and tank caps

**Weston Body Hardware Ltd.**

Crossgate Road  
Park Farm Redditch B98 7SN  
United Kingdom

Phone +44(0)1527 5160600

Fax +44(0)1527 5260600

E-Mail [lockmaster@westonbodyhardware.com](mailto:lockmaster@westonbodyhardware.com)

[www.westonbodyhardware.com](http://www.westonbodyhardware.com)



## HOOK LATCH REMOTE- OPERATED

This novel design has a spring-loaded hook in 4mm material, mounted into a 'U'-section case. The hook slams against a pin or slot and is released by side ways 'pull'. Finish is zinc-plated

## DIECAST SNAP-CATCH

A clever little catch, used for holding hatches and panels in either open or closed positions. A concealed spring and 'detente' holds the arm securely in position. Finished in black powder-coating and suitable for inside or external fitting.

## OUTSIDE HOLD- BACK [CORROSION- RESISTANT]

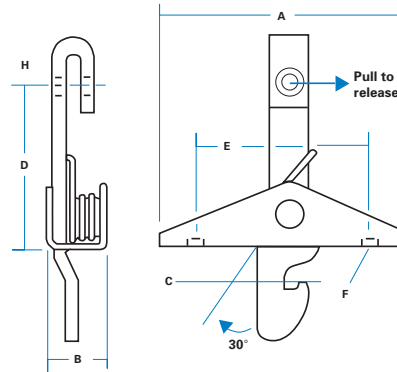
A useful exterior slam catch, with white nylon 'jaws' supported on stainless coil springs for smooth action and strong retention. Pull-out force for separation is 15 Kg.



9/01479

### ORDERING CODE

9/01479 Hook latch



Max. travel of actuating lever is 20mm to give hook movement of 30° approx.

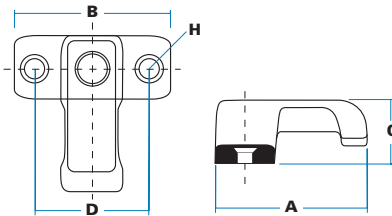
### SPECIFICATION

A Case Length	75 mm
B Case Width	20 mm
C Depth Of Hook	17 mm
D Height	47 mm
E Hole Centres	57 mm
F Hole Sizes	5 mm
H Hole Size, (diameter)	6mm c/s 9 mm



### ORDERING CODE

9/01936 Diecast snap-catch



### SPECIFICATION

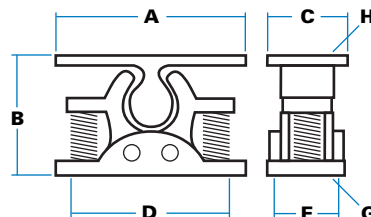
A Arm length	47 mm
B Plate length	48 mm
C Height	19 mm
D Hole Centres	35 mm
H Hole Sizes (dia)	c/s 4 mm



9/01828 (set)

### ORDERING CODE

9/01828 Outside hold-back (set)



### SPECIFICATION

A Length	65 mm
B Depth (closed)	41 mm
C Width	30 mm
D Hole centres	55 mm
E Hole centres	17mm
G Base hole sizes (dia)	4 mm
H Top holes (slots)	4 mm x 9 mm

9/01383 Catch in  
'open' position



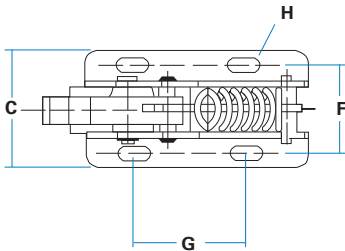
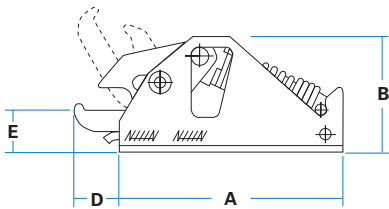
9/01384 Double  
loop striker

Catch in  
'closed' position

## ORDERING CODE

9/01383 Hold-down catch

9/01384 Double loop striker

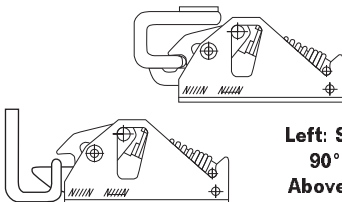


## SPECIFICATION

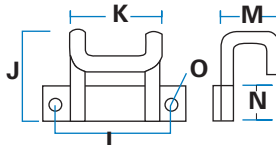
<b>A</b> Case Length	110 mm
<b>B</b> Case Height	56 mm
<b>C</b> Case Width	58 mm
<b>D</b> Projection	21 mm
<b>E</b> 'Claw' Height	21 mm
<b>F</b> Hole Centres	44 mm
<b>G</b> Hole Centres	55 mm
<b>H</b> Hole Sizes	16.5 x 6 mm

<b>J</b> Height Of Loop	60 mm
<b>K</b> Width Of Loop	50 mm
<b>L</b> Hole Centres	70 mm
<b>M</b> Projection	45 mm
<b>N</b> Plate Width	30 mm
<b>O</b> Hole Size	8 mm

The 'Double-loop' striker provides great freedom in the mounting positions of catch and striker.



Left: Striker is at  
90° to catch  
Above: Striker is  
parallel with catch



# 120

## INSIDE HOLD-DOWN CATCH over-centre action

A robust and simple plant-on unit which uses over-centre action to trap and hold down the striker-loop. Widely used for engine covers, grills, luggage compartments and for machine covers and canopies.



The catch is mounted on cover or base, and simply slams against a striker. Release is by direct pull away from striker, usually using a grab handle. Pull -out force is 20kg (55lbs)



Slam-action causes moulded 'claw' to rotate through 60°, bringing the powerful spring over-centre to trap and hold down the striker loop.



Fixing through four elongated holes in base-plate.



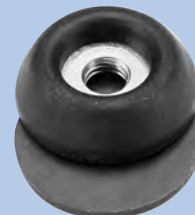
Steel parts are zinc-plated. 'Claw' is glass-filled nylon in black.



Use with grab handles 9/01526, 9/00214 or similar.

## DOOR BUFFER ASSEMBLY

Moulded buffer with steel insert threaded M8, together with two steel spacing washers. Cushions door closure, prevents rattle.



9/01968

Buffer height 10mm x 30mm diameter. Black, with plated insert.



'Snap-in' Barrel  
'FS' or 'FT'



'Customised'  
Key

**604130**  
Locking cap



Double-sided "FT"  
keys only

## HEAVY-DUTY LOCKING FILLER CAP [& NECKS]

A sturdy, diecast cap designed for construction plant and heavy trucks, with a 'snap-in' barrel, allowing the cap to be matched with a full vehicle lock-set. A sliding diecast plate protects the key-aperture from water and debris.

Recommended specification is fully sealed, but caps can be vented for some applications. This model suits "internally-flanged" neck-ends, (illustrated) which can be brazed onto a plain filler pipe, generally at 76 mm (3 inch) diameter.

**!** Double-walled diecast construction with 'skirt' protecting the latch 'bayonet'. Finger-bar and scalloped edge for good grip, cover plate for weather-resistance.

**W** Rotate (unlocked) cap on filler neck until fully engaged, then turn key to operate latching tongue. Key only withdraws in 'locked' position.

**K** 'FT' keys as standard, with shuttered keyway. Optionally 'FS', 'DLP' or 'Ronis' key types.

**W** Black as standard. Other colours to request (red or yellow for diesel, etc).

**M** Zinc alloy diecastings, with steel 'bayonet' and latch, and bonded steel/nitrile rubber seal.

**?** - Coloured finishes  
- 'Bayonets' at 45 & 55 mm  
- Optional retaining chain  
- Special key numbers/sets  
- 'Customised' key types

**T** Caps are 100% tested to withstand tank pressure of 0.14 KgF/cm<sup>2</sup> (2 lb/in<sup>2</sup>) Inversion tests ensure caps do not exceed permitted flow rates on valved/vented models

### ORDERING CODE

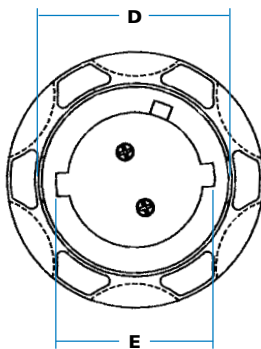
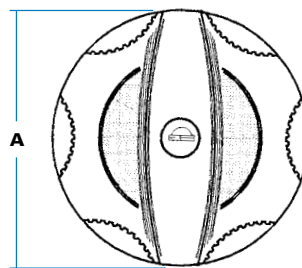
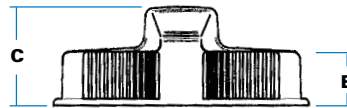
**604130** Filler cap, black, non-vented

**604131** Filler cap, black, vented

**616900** Steel neck-end, (76 mm pipe)

(Ask for advice on suitability of caps where tank venting is required. EC regulations may apply.)

### SPECIFICATION



**616900**  
78mm I.D.  
(accepts  
68 mm  
bayonet)

**616901**  
58mm I.D.  
(accepts  
45 mm  
bayonet).

<b>A</b> Diameter	110 mm
<b>B</b> Base height	23 mm
<b>C</b> Max. height	44 mm
<b>D</b> Inside diameter	83 mm
<b>E</b> 'Bayonet' diameter	68 mm

**Note:** Alternative 'bayonets' can be fitted at 45 mm & 55 mm diameter, but these will reduce resistance of cap to vandal attack.

#### Filler neck ends

These are internally-flanged neck ends in mild steel, suitable for brazing to plain pipes at 76 mm (3 inch) and 57 mm (2.25 inch) diameter. Height is 18-20 mm only. Also in aluminium.



Non-locking cap with optional chain

Optional 'Snap-in' Barrel 'FS' or 'FT'



'Customised' Key option



Locking cap with optional 'Diesel' labels

### ORDERING CODE

**'Non-vented' models with 68 mm bayonet**

- 602935** 'Chunky' cap locking, black
- 602936** 'Chunky' cap, non-locking, black
- 602888** 'Chunky' cap, locking, grey
- 604122** 'Chunky' cap, non-locking, grey

**'Vented' models with 68 mm bayonet**

- 600281** 'Chunky' cap, locking, black
- 600296** 'Chunky' cap, non-locking, black

**616900** Steel neck-end, 77 mm diameter

**616901** Steel neck-end, 58 mm diameter

(Ask for advice on suitability of caps where venting is required. EC regulations may apply).

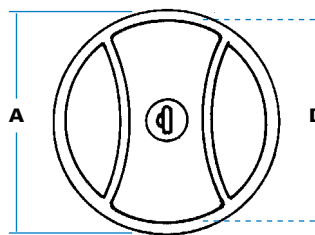
**616900**  
78mm I.D.  
(accepts  
68 mm  
bayonet).



**616901**  
58mm I.D.  
(accepts  
45 mm  
bayonet).



### SPECIFICATION



<b>A</b> Diameter	87 mm
<b>B</b> Base height	24 mm
<b>C</b> Max. height	42 mm
<b>D</b> Inside diameter	84 mm
<b>E</b> 'Bayonet' diameter (not shown)	68 mm

**Note:** Alternative 'bayonets' can be fitted at 45 mm & 55 mm diameter, but these will reduce resistance of cap to vandal attack.

**Filler neck ends**

These are internally-flanged neck ends in mild steel, suitable for brazing to plain pipes at 76 mm (3 inch) and 57 mm (2.25 inch) diameter. Height is 18-20 mm only.

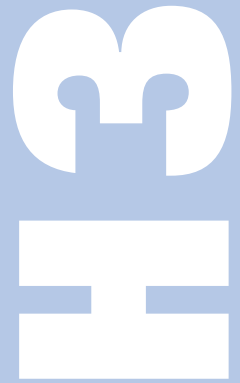
## 'CHUNKY' COMMERCIAL FILLER CAPS (& NECKS)

This model has been used by every British truck manufacturer as well as for 'static' applications such as power generator sets. Recommended specification is fully sealed but the 'Waso' venting system will suit some applications. Caps fit "internally-flanged" neck-ends, (illustrated) which can be brazed onto a plain filler pipe, generally at 76 mm (3-inch) diameter.

- !** Attractive, moulded 'shroud' with textured finish, and shaped top for good grip. 'Snap-in' lock barrel allows cap to be matched with full vehicle lockset.
- W** Rotate cap on filler neck until fully engaged. On locking models, turn key to operate latching tongue. Key only withdraws in 'locked' position.
- K** 'S'-type key as standard, with shuttered keyway. Optionally 'FS', 'FT', 'DLP' or 'Ronis' key types.
- P** Textured finish in black or grey. Other colours to special order only.
- M** Zinc alloy diecastings, with mineral-filled polypropylene shroud, steel 'bayonet' & latch, and bonded steel/nitrile rubber seal.
- ?** - Valved/vented specification  
- 'Bayonets' at 45 & 55 mm  
- Optional retaining chain  
- 'Diesel' labels  
- 'Snap-in' barrel  
- 'Customised' key types.

**T** Caps are 100% tested to withstand tank pressure of 0.14 KgF/cm<sup>2</sup> (2 lb/in<sup>2</sup>) Inversion tests ensure caps do not exceed permitted flow rates on valved/vented models.

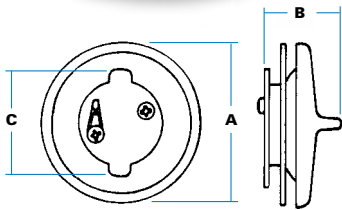




604021  
'Finger-bar' cap, black



604023  
'Diesel' cap, red.



### ORDERING CODE

'Non-vented' models (fully sealed)

- 604020 Finger-bar cap, grey
- 604021 Finger-bar cap, black
- 604023 Finger-bar cap, red (diesel)

'Valved & vented' models

- 604005 Finger-bar cap, grey
- 606581 Finger-bar cap, black
- 606090 Finger-bar cap, red (diesel)

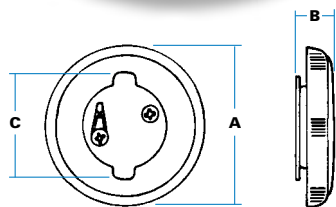
### SPECIFICATION

<b>A</b> Diameter	72 mm
<b>B</b> Height	30 mm
<b>C</b> Bayonet diameter	45 mm

A steel neck-end (616901) suits these caps, suitable for brazing to plain pipes at 57 mm (2.25 inch) diameter.

## NON-LOCKING MOULDED FILLER CAPS

These caps have been widely used for on-road passenger cars and vans, as well as for industrial engines and static fuel tanks. There are two styles, with either 'finger-bar' or 'knurled rim', and both can be supplied in red with raised, "diesel" lettering. Recommended specification is fully sealed, but the 'Waso' venting system will suit some applications. Caps fit "internally-flanged" necks at 57 mm (2.25 inch) diameter, and steel or diecast neck-ends are available.



604016  
'Diesel' cap, red.

### ORDERING CODE

'Non-vented' models (fully sealed)

- 604011 Knurled cap, black
- 604016 Knurled cap, red (diesel)

'Valved & vented' models

- 604001 Knurled cap, black
- 604006 Knurled cap, red (diesel)

(Ask for advice on suitability of caps where venting is required. EC regulations may apply).

### SPECIFICATION

<b>A</b> Diameter	72 mm
<b>B</b> Height	18 mm
<b>C</b> Bayonet diameter	45 mm

A screw-on diecast neck end (616421) can be used with this type of cap (with special bayonet).

- !** Visually attractive caps, resistant to scratching and corrosion, shaped for easy opening and removal.
- 🔧** Rotate cap on filler neck until fully engaged against ramped form.
- 🔧** Gloss finish on finger-bar caps in black, grey or red. Textured finish on 'knurled' caps in black or red.
- M** Acetal mouldings, with steel bayonet and bonded steel/nitrile rubber seal.
- ?** - Valved/vented specification  
- 'Bayonets' at 45 & 55 mm  
- Optional retaining chain
- T** Caps are 100% tested to withstand tank pressure of 0.14 KgF/cm<sup>2</sup> (2 lb/in<sup>2</sup>)  
Inversion tests ensure caps do not exceed permitted flow rates on valved/vented models.

Retro-fit neck-end





**604037**  
'Trimlock' cap with closed flap showing "skirt" at base



Standard 'S' series keys



**604038**  
'Trimlock 2' cap with flap open

## ORDERING CODE

### 'Non-vented' models (fully sealed)

**604037** 'Trimlock' cap, black

**604038** 'Trimlock-2' cap, black

### 'Valved & vented' models

**604039** 'Trimlock' cap, black

**604040** 'Trimlock-2' cap, black

**616901** Steel neck-end, 58mm diameter

**616421** Diecast filler neck

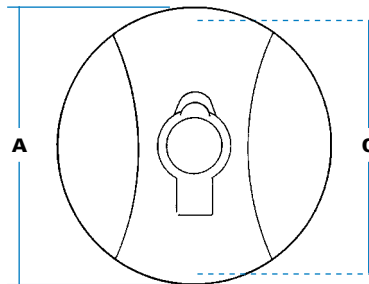
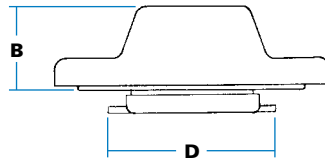
(Ask for advice on suitability of caps where venting is required. EC regulations may apply).

### 'Trimlock' & 'Trimlock-2' models

The original 'Trimlock' design sits neatly over the filler neck. Because this can be restrictive in some cases, the 'Trimlock-2' model has no "skirt", with wider diameter to give a lower, more streamlined appearance.



## SPECIFICATION



<b>A</b> Outside diameter (Trimlock)	70 mm
<b>A</b> Outside diameter (Trimlock-2)	78 mm
<b>B</b> Height	24 mm
<b>C</b> Inside diameter (Trimlock only)	65 mm
<b>D</b> Bayonet (Standard)	45 mm

### Diecast filler neck-end (616421)

This diecast 'adaptor' ring fits a plain or externally-flanged pipe at 58 mm (2.25 inch) diameter, and is secured with two self-tapping screws. Aperture width is 42 mm, requiring the 37 mm 'bayonet' on accompanying cap.



## 'RETRO-FIT' LOCKING FILLER CAPS & NECKS

Designed by the 'Waso' company for the automotive aftermarket, these caps are useful when it is desired to add an inexpensive lock to a fuel tank as a security measure. A diecast neck-end (which can be fitted on-site) allows caps to be used even on plain filler pipes. The two models illustrated are identical apart from some details of cover mouldings.

**!** Smart moulded 'shroud' with unique flap design to prevent water ingress. Shape allows easy removal even in confined spaces.

**W** Rotate (unlocked) cap on filler neck until fully engaged, then turn key to operate latching tongue. Key only withdraws in 'locked' position.

**K** 'S'-type double-sided keys.

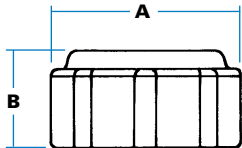
**F** Black textured finish.

**M** Zinc alloy diecast, with mineral-filled polypropylene shroud, steel 'bayonet' & latch, and bonded steel/nitrile rubber seal.

**?** - Valved/vented specification  
- 'Bayonets' at 37, 45, & 55 mm  
- Optional retaining chain  
- 'Diesel' labels

**T** Caps are 100% tested to withstand tank pressure of 0.14 KgF/cm<sup>2</sup> (2 lb/in<sup>2</sup>) Inversion tests ensure caps do not exceed permitted flow rates on valved/vented models.

**602691**  
Castellated cap with  
optional chain



## SPECIFICATION

<b>A</b> Diameter	66 mm
<b>B</b> Height	36 mm

Internal diameter 60 mm x 6 mm buttress thread  
(see engineering drawing for details of thread).

## ORDERING CODE

<b>602691</b>	Castellated cap, non-vented
<b>601576</b>	Castellated cap, valved & vented

## SCREW-TYPE (NON-LOCKING) FILLER CAPS

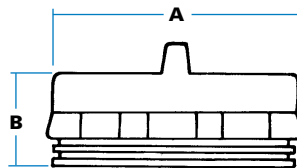
Two models of moulded cap with internal screw-thread, designed for 60 mm-diameter necks with matching thread.

The smaller cap has castellated ridges for good grip, and 'diesel' embossed on the top surface. It can be supplied fully sealed, or valved and vented. Normal finish is semi-gloss black, with colours on request. A chain is optional.

The larger cap will fit the same neck but has a ratchet-ring to prevent overtightening, and a central finger-bar. It is fully sealed, with black fine-textured finish.



**603246**  
Ratchet cap



## ORDERING CODE

<b>603246</b>	Ratchet cap, non-vented
---------------	-------------------------

## SPECIFICATION

<b>A</b> Diameter (max)	76 mm
<b>B</b> Height (max)	54 mm

Internal diameter 60 mm buttress thread.  
Ratchet torque is 1.5 - 2.0 NM. Cap seals to pressure of 4 lb/in<sup>2</sup> when tightened to first 'click' of ratchet.

**M** Moulded in acetal, with nitrile rubber seals

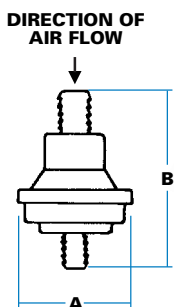
**T** Caps are 100% tested to withstand minimum tank pressure of 0.14 KgF/cm<sup>2</sup> (2 lb/in<sup>2</sup>). Inversion tests ensure caps do not exceed permitted flow rates on valved/vented models.

## FUEL TANK VACUUM-RELIEF VALVES

These one-way valves allow air to be drawn into the fuel tank, assisting flow and preventing implosion, but do not allow fuel vapour to be released.

Push-fit hoses allow valves to be connected to a spur-pipe, with inlet usually between body panels or other convenient location.

Valves normally contain a steel ball, but with a nylon ball they operate without fuel leakage at an angle of 90° to horizontal. Material is acetal.



**693296**  
Valve with hoses  
attached



**694035**  
Valve only



## ORDERING CODE

<b>694035</b>	Relief valve only, (steel ball)
<b>693296</b>	Relief valve & hoses (steel ball)
<b>693041</b>	Relief valve only, (nylon ball)
<b>693202</b>	Relief valve & hoses (nylon ball).

## SPECIFICATION

<b>A</b> Diameter (max)	36 mm
<b>B</b> Height (max)	54 mm
Upper spigot, diameter 9 mm (hose 14 mm)	
Lower spigot diameter, 6 mm (hose 11 mm)	